

County of Albany

Harold L. Joyce
Albany County Office Building
112 State Street - Albany, NY 12207



Meeting Agenda

Tuesday, January 26, 2021

6:15 PM

Held Remotely

Conservation, Sustainability and Green Initiatives **Committee**

PREVIOUS BUSINESS:

1. APPROVING PREVIOUS MEETING MINUTES
2. AN ACT PERTAINING TO THE ALBANY COUNTY PLANNING BOARD AND CONSIDERATION OF CRITICAL VIEWSHEDS OF THE HELDERBERG ESCARPMENT

CURRENT BUSINESS:

3. APPROVING THE DESIGNATION OF THE ALBANY COUNTY SOIL AND WATER CONSERVATION DISTRICT TO ADMINISTER THE NATIONAL GRID 10,000 TREES AND GROWING PROGRAM FOR ALBANY COUNTY

County of Albany

*Harold L. Joyce
Albany County Office Building
112 State Street - Albany, NY 12207*



Meeting Minutes

Tuesday, November 24, 2020

6:15 PM

Held Remotely

Conservation, Sustainability and Green Initiatives Committee

CURRENT BUSINESS:

Present: William Reinhardt, Beroro T. Efekoro, Matthew J. Miller,
Merton D. Simpson, Victoria Plotsky, Samuel I. Fein,
Patrice Lockart and Frank J. Commisso

Excused: Peter B. Tunny

1. APPROVING PREVIOUS MEETING MINUTES

A motion was made that the previous meeting minutes be approved. The motion carried by a unanimous vote.

**2. AN ACT PERTAINING TO THE ALBANY COUNTY PLANNING BOARD
AND CONSIDERATION OF CRITICAL VIEWSHEDS OF THE
HELDERBERG ESCARPMENT**

Tabled at the request of the Sponsor.

RESOLUTION NO. 384

**AN ACT PERTAINING TO THE ALBANY COUNTY PLANNING BOARD
AND CONSIDERATION OF CRITICAL VIEWSHEDS OF THE
HELDERBERG ESCARPMENT**

Introduced: 11/[24]9/20

By: Messrs. Perlee, Reinhardt, Ms. Plotsky, Messrs. Simpson, Smith and Miller

WHEREAS, Albany County, pursuant to Article 11 of its Charter created [the] a County Planning Board, and

WHEREAS, The Board is “advisory to and assist(s) the County Legislature ... on matters related to comprehensive metropolitan, regional, county and municipal planning and in performing the duties and responsibilities conferred upon a county planning board by Article 12-B of the [NYS] General Municipal Law and on such other related matters as shall be required or requested by the County Legislature.” (Albany County [Code] Charter Article 11, § [Section] 1103), and

WHEREAS, Albany County contains within its borders a variety of unique scenic and geological features of inestimable value to the County and the quality of life of its citizens, including the famous Helderberg Escarpment, and

WHEREAS, Viewsheds of the Helderberg Escarpment from the Hudson Valley are of great economic, historic and cultural importance to residents and properties within the Towns of Guilderland, New Scotland and Bethlehem in particular, and

WHEREAS, Residents of the aforementioned towns consider viewsheds of the Helderberg Escarpment to be a critical natural asset and wish to guide development to avoid unnecessary impacts upon the views of the escarpment, to the extent possible, and

WHEREAS, The Albany County Planning Board is tasked with bringing “[...]pertinent inter-community and county-wide planning, zoning, site plan and subdivision questions to the attention of neighboring municipalities and agencies having jurisdiction, including protection of community character as regards predominate land uses” (General Municipal Law § 239-L [-] (2) (d)), now, therefore, be it

[NOW, THEREFORE, BE IT] RESOLVED, That the Albany County Legislature requests that the Albany County Planning Board, as part of its subdivision, site plan, zoning, and other review[s], pay particular attention to [address] “viewsheds” and [a/k/a] “important views”[,] pertaining to the Helderberg

Escarpment, and [to] identify and consider adverse impacts upon views and possible mitigation of those impacts when preparing its comments to each General Municipal Law referring agency, and be it further

[BE IT FURTHER] RESOLVED, That [in order to effect the legislative intent of this Resolution,] the Albany County Department of Economic Development, Conservation and Planning is [hereby directed] requested to prepare and provide to the Legislature a Scenic Resources Assessment and Viewshed Inventory for the primary public roadway corridors and priority viewsheds within the [aforesaid townships] Towns of Guilderland, New Scotland and Bethlehem, and be it further [Said Assessment and Inventory shall be incorporated within and made a part of the County's Comprehensive Plan and any other Regional Plan or other land use guides to which the County is a party or contributor.]

[BE IT FURTHER] RESOLVED, That the Clerk of the County Legislature is directed to forward certified copies of this resolution to the appropriate County Officials. [County Planning Board provide its comments in this regard to the referring agency with its other comments.]



DANIEL P. MCCOY
COUNTY EXECUTIVE

COUNTY OF ALBANY
OFFICE OF THE EXECUTIVE
112 STATE STREET, ROOM 1200
ALBANY, NEW YORK 12207-2021
(518) 447-7040 - FAX (518) 447-5589
WWW.ALBANYCOUNTY.COM

DANIEL C. LYNCH, ESQ.
DEPUTY COUNTY EXECUTIVE

December 31, 2020

Honorable Andrew Joyce, Chairman
Albany County Legislature
112 State Street, Room 710
Albany, New York 12207

Dear Chairman Joyce:

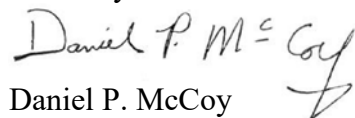
Following the severe wind storm on October 7, 2020, National Grid made \$20,000 available to Albany County through a special release of its '10,000 TREES...AND GROWING!' program. The funding is in the form of a reimbursement grant of \$150 per tree to replace trees that were damaged or lost during the severe storm. The funding is targeted at municipalities hardest hit by the storm and does not apply to the City of Albany, which is receiving its own dedicated funding from National Grid.

The County is electing to run the program through the Soil and Water Conservation District based on their specialized knowledge and experience administering both grant and tree programs. National The County and District have already begun working with heavily impacted municipalities to determine locations for tree planting. The partnering municipalities will be required to provide one year of maintenance.

National Grid requires a resolution of the governing body of the County to designate an entity other than the County to administer the program. Sample resolution language provided by National Grid is attached.

If you should have any questions, please do not hesitate to contact me.

Sincerely


Daniel P. McCoy
Albany County Executive

cc: Hon. Dennis Feeney, Majority Leader
Hon. Frank Mauriello, Minority Leader
Rebekah Kennedy, Majority Counsel
Arnis Zilgme, Minority Counsel



County of Albany

Harold L. Joyce
Albany County Office
Building
112 State Street - Albany,
NY 12207

Legislation Text

File #: TMP-2194, **Version:** 1

REQUEST FOR LEGISLATIVE ACTION

Description (e.g., Contract Authorization for Information Services):

Requesting a Resolution Endorsing the Albany County Soil and Water Conservation District to Administer the National Grid '10,000 Trees...And Growing!' Program for Albany County

Date:	12/31/2020
Submitted By:	Lucas Rogers
Department:	Office of the County Executive
Title:	Senior Policy Analyst
Phone:	518-447-5566
Department Rep.	
Attending Meeting:	Lucas Rogers

Purpose of Request:

- Adopting of Local Law
- Amendment of Prior Legislation
- Approval/Adoption of Plan/Procedure
- Bond Approval
- Budget Amendment
- Contract Authorization
- Countywide Services
- Environmental Impact/SEQR
- Home Rule Request
- Property Conveyance
- Other: (state if not listed) Click or tap here to enter text.

CONCERNING BUDGET AMENDMENTS

Increase/decrease category (choose all that apply):

- Contractual
- Equipment
- Fringe
- Personnel

- Personnel Non-Individual
- Revenue

Increase Account/Line No.: Click or tap here to enter text.
Source of Funds: Click or tap here to enter text.
Title Change: Click or tap here to enter text.

CONCERNING CONTRACT AUTHORIZATIONS

Type of Contract:

- Change Order/Contract Amendment
- Purchase (Equipment/Supplies)
- Lease (Equipment/Supplies)
- Requirements
- Professional Services
- Education/Training
- Grant

Choose an item.

Submission Date Deadline Click or tap to enter a date.

- Settlement of a Claim
- Release of Liability
- Other: (state if not listed) Click or tap here to enter text.

Contract Terms/Conditions:

Party (Name/address):

Albany County Soil and Water Conservation District
24 Martin Road
Voorheesville, NY 12186

Additional Parties (Names/addresses):

Click or tap here to enter text.

Amount/Raise Schedule/Fee: Click or tap here to enter text.
Scope of Services:

Bond Res. No.: Click or tap here to enter text.
Date of Adoption: Click or tap here to enter text.

CONCERNING ALL REQUESTS

Mandated Program/Service: Yes No
If Mandated Cite Authority: Click or tap here to enter text.

Is there a Fiscal Impact: Yes No

Anticipated in Current Budget: Yes No

County Budget Accounts:

Revenue Account and Line: Click or tap here to enter text.

Revenue Amount: Click or tap here to enter text.

Appropriation Account and Line: Click or tap here to enter text.

Appropriation Amount: Click or tap here to enter text.

Source of Funding - (Percentages)

Federal: Click or tap here to enter text.

State: Click or tap here to enter text.

County: Click or tap here to enter text.

Local: Click or tap here to enter text.

Term

Term: (Start and end date) Click or tap here to enter text.

Length of Contract: Click or tap here to enter text.

Impact on Pending Litigation Yes No

If yes, explain: Click or tap here to enter text.

Previous requests for Identical or Similar Action:

Resolution/Law Number: Click or tap here to enter text.

Date of Adoption: Click or tap here to enter text.

Justification: (state briefly why legislative action is requested)

Following the severe wind storm on October 7, 2020, National Grid made \$20,000 available to Albany County through a special release of its ‘10,000 TREES...AND GROWING!’ program. The funding is in the form of a reimbursement grant of \$150 per tree to replace trees that were damaged or lost during the severe storm. The funding is targeted at municipalities hardest hit by the storm and does not apply to the City of Albany, which is receiving its own dedicated funding from National Grid.

The County is electing to run the program through the Soil and Water Conservation District based on their specialized knowledge and experience administering both grant and tree programs. National The County and District have already begun working with heavily impacted municipalities to determine locations for tree planting. The partnering municipalities will be required to provide one year of maintenance.

National Grid requires a resolution of the governing body of the County to designate an entity other than the County to administer the program. Sample resolution language provided by National Grid is attached.



2020 October Wind Storm Mitigation APPLICATION

Date _____ County _____

Municipality/Agency _____

Contact person _____ Position/Title _____

Address _____

_____ Zip code _____

Phone _____ E-Mail _____

Not-for-profit group* (*acting on behalf of a municipality*) _____

Contact person _____

Address _____

_____ Zip code _____

Phone _____ E-Mail _____

Estimated number of trees to plant _____ Spring ____ and/or Fall ____

Who will complete the tree planting _____

Who will maintain the plantings for the first year _____

Planting map enclosed ___Yes ___No

**NOTE: Not-for-profit groups must submit a supporting local resolution provided by the municipality approving the group to act on their behalf*

Mail the completed application and required documentation to:

Duane S. Dickinson
Vegetation Strategy
259 Maplewood Dr
West Rutland, VT 05777

10,000 TREES...AND GROWING!

WHAT IT WAS...AND IS NOW:

Originally developed in 1999 to assist upstate New York communities within the Niagara Mohawk service territory which sustained extensive street and urban forest tree losses in the ice and wind storms of 1998, the **10,000 TREES** program assisted communities in planting more than 11,000 trees during the three years of the program. Through proper species selection and placement, participating communities planted trees that benefit our natural environment and were able to have some of those planting costs offset through contributions from the program by Niagara Mohawk.

Building upon that success, National Grid is pleased to be able to continue to assist communities in their tree installation projects in the form of our **10,000 TREES...AND GROWING!** program. Utility compatible, low growing trees planted successfully under overhead primary and secondary electric lines that are accepted under the guidelines of the program will receive a contribution reimbursement of **\$150/tree from National Grid up to a maximum of \$20,000**. The proper selection and placement of low growing trees planted now can significantly avoid or minimize utility line conflicts in the future, reduce or eliminate line clearance tree pruning of those trees and minimize storm related tree disruptions and damages to the overhead electric distribution system. **Trees planted in other location in the community are eligible as part of tree replacement mitigation due to the October 2020 wind storm.**

HOW MUCH MONEY IS AVAILABLE?

Participants will be reimbursed **\$150/tree** for trees that are successfully planted on municipal property in compliance with the program guidelines Please note...this is **not** a pre-planting grant. Participants must have funds available for their projects in advance.

HOW DOES THE PROGRAM WORK?

- 1: Return the enclosed registration form.
- 2: Provide the required information from the enclosed guidelines. You may submit existing plans for projects already in-progress, recognizing the limiting species and location qualifications.
- 3: Once planted, submit the list of trees installed, date planted and a map or excel sheet (provided by NG) detailing their locations. A National Grid Distribution Forestry staff member will conduct a site audit and inspection of the trees
- 4: When the audit is complete, you will be notified by letter as to how many trees have been accepted and if (and why) any rejections. A reimbursement check will follow shortly thereafter.

WHAT TYPES OF TREES CAN BE PLANTED?

A list of recommended urban trees that has been developed in cooperation with Cornell University for planting is enclosed. To assure that trees planted under this program survive, recognized horticultural planting practices, maintenance, mulching and care should be utilized to assure proper rooting and establishment. This also requires attention and proper care in storage, handling and moving the trees prior to installation. There are no size requirements or limitations.

NEED ADDITIONAL HELP?

National Grid is committed to helping you succeed in this project. If you have questions about the application, the guidelines or the program, please contact Duane Dickinson at 802-770-0197 or duane.dickinson@nationalgrid.com. If you have questions related to the recommended tree species or planting techniques, you may contact Cornell Cooperative Extension or the NYS Department of Environmental Conservation office nearest you or visit the Cornell Urban Horticulture Institute website at www.hort.cornell.edu.



Program Guidelines

<p>1. Estimate Number of Trees to Plant</p>	<p>Identify the planting area and an estimate of the number of low growing, utility compatible trees to be planted, under overhead primary or secondary electric lines, indicating on the application your planting time... Spring, Fall or both.</p>
<p>2. Site Assessment</p>	<p>It is strongly <i>advised</i> that you complete a Site Assessment Checklist (SAC) to facilitate your planting process evaluating the applicable factors for each planting area before you select trees for the location (<i>see enclosed</i>).</p>
<p>3. Tree Selection</p>	<p>Using your completed SAC and the tree lists below as a guide, select trees that are suitable for the planting sites:</p> <ul style="list-style-type: none"> • Cornell University's "Recommended Urban Trees: Site Assessment and Tree Selection for Stress Tolerance" bulletin from Cornell Cooperative Extension Service download a copy FREE from the on-line version at http://www.hort.cornell.edu/uhi/outreach/recurbtrees/pdfs/~recurbtrees.pdf • National Grid's "Recommended Urban Trees..." list (<i>enclosed</i>), <i>or</i> • NYS DEC's "Recommended Trees for Communities in NY State" • Where over-head utilities exist, plantings shall not exceed 25' at maturity. Other species may be considered depending on location of planting.
<p>4. Avoid Danger -Always call before you dig!</p>	<p>Identify overhead and/or buried utilities in the planting area. ALWAYS contact Dig Safely New York at 811 or 800-962-7962 to mark the planting sites for underground utilities at least 2 days prior to digging.</p>
<p>5. Planting Plan/Map</p>	<p>Provide a map or excel sheet (provided by NG) of the planting area, noting the tree species planted at each location with your application.</p>
<p>6. Tree Planting Care and Maintenance</p>	<p>Proper planting, care, and maintenance of your trees in the first year are critical to the success of your tree program. Please provide an outline of how trees will be cared for after planting for the first year with your application.</p>
<p>7. Supporting Resolution</p>	<p>If the planning, planting and project coordination is to be done by a not-for-profit committee or volunteer group, a supporting resolution provided by the municipality must be provided with your application (<i>samples enclosed</i>).</p>
<p>8. Post Planting Map and Site Audit</p>	<p><u>Once planted</u>, please forward a final list of the planting locations.</p> <ul style="list-style-type: none"> • Location of the planted trees by street (streets & house numbers listed alphabetically/numerically, <i>please</i>) and species • Date of planting <p>A National Grid Arborist will complete a site audit . (<i>Please keep in mind, that this is a reimbursement contribution and not a pre or post planting grant! All payments are made upon the successful survival and acceptance of those trees that meet the program guidelines following a site audit.</i></p>

Our goal is to support your community efforts to "plan before planting". This helps assure that trees are selected and planted to improve their chances for survival and minimize (*or eliminate*) future conflicts with underground and especially overhead electric utilities. Such foresight reduces the needs for future line clearance tree pruning or removals, reduces tree caused outages, eliminates the hazards and problems caused by past poor performing tree species (i.e. Silver Maple) and adds a greater variety and diversity of tree species in your community. *If questions, please contact Duane Dickinson at 802-770-0197 or duane.dickinson@nationalgrid.com*

SAMPLE ACCEPTABLE RESOLUTIONS

A resolution in one of the appropriate forms provided below must be passed at an official meeting of the governing body of the applicant and a copy attached to this application. The resolution must be typed on the applicant's official stationery and should hold the official seal. The name of the applicant must be stated as it is recorded in the incorporation documents. Use the appropriate phrase in bold or brackets, depending on whether the applicant is a not-for-profit corporation or municipality, respectively:

A: MUNICIPAL RESOLUTION

I, *(name)*, *[the duly elected and qualified secretary]* OR *[the duly qualified and acting clerk]* of the *(municipality)* of *(place)*, New York, do hereby certify that the following resolution was adopted at a *(regular)* *(special)* meeting of the *(governing body)* held on *(date)*, and is *[incorporated in the original minutes of said meeting]* OR *[on file and on record]*, and that said resolution has not been altered, amended or revoked and is in full force and effect.

RESOLVED:

That *(name)*, as *(title)* of *(municipality)* is hereby authorized and directed to file an application for contributory reimbursement funds as part of the “**10,000 Trees...And Growing!**” tree planting program, and upon approval of said request, to enter into and execute a project agreement with National Grid for such financial contribution to this municipality.

(Signature of Secretary)
Seal of Organization

(Signature of Clerk)
Seal of Municipality

Date: _____

B: MUNICIPAL ENDORSEMENT- USE WHEN APPLICANT IS A NOT-FOR-PROFIT ORGANIZATION

Resolution No.: _____

WHEREAS, the *(insert Not-For-Profit Name)* is applying to National Grid for the “**10,000 Trees...And Growing!**” tree planting reimbursement program to be located *(insert location)*, a site located within the territorial jurisdiction of this *(Board, Council or Legislature)*; and

WHEREAS, as a requirement under the rules of these programs, said not-for-profit corporation must obtain the “approval/endorsement of the governing body of the municipality in which the project will be located”,

NOW, THEREFORE, be it resolved by this august body that the *(Board, Council or Legislature)* of *(municipality)* hereby does approve and endorse the application of *(Not-For-Profit group)* to apply for contributory reimbursements under the “**10,000 Trees...And Growing!**” program for a project known as *(project title)* and located within this community.

Date of Adoption _____

Certification by Clerk _____

SITE ASSESSMENT CHECKLIST (NOTE: does **not** need to be submitted...for your use/reference)

1. Site Location _____

2. Site Description _____

3. Climate

a. USDA Hardiness Zone

___ 6b ___ 5b ___ 4b ___ 3b
___ 6a ___ 5a ___ 4a ___ 3a

b. Microclimate Factors

___ Re-reflected heat load
___ Frost pocket
___ Wind
Other _____

c. Sunlight Levels

___ Full sun (6 hrs. or more)
___ Partial sun or filtered light
___ Shade

d. Irrigation Levels

___ No supplemental irrigation
___ Automatic irrigation system
___ Irrigation amount and rate:

4. Soil Factors

a. Range of pH Levels _____

(Note actual readings on sketch)

b. Texture

___ Clayey
___ Loamy
___ Sandy

c. Compaction Levels

___ Severely compacted
___ Moderately compacted
___ Somewhat compacted
___ Not compacted

d. Drainage Characteristics

___ Presence of mottled soil
___ Low-lying topography
___ Indicator plants suggest site drainage:
___ Wet well-drained dry
___ Percolation test results (in./hr.)
___ Poorly drained (< 4"/hr.)
___ Moderately drained (4"- 8"/hr.)
___ Excessively drained (> 8"/hr.)

e. Other Soil Considerations

___ Indications of soil layer disturbance
___ Evidence of recent construction
___ Presence of construction debris
___ Noxious weeds present:

___ Evidence of excessive salt usage
___ Erosion of soil evident
___ Evidence of soil contamination
___ Usage that compacts soil

f. Specific Soil Problems

5. Structural Factors

a. Limitations to above-ground space

___ Overhead wires (height: _____)
Proximity to buildings/structures:
Other _____

b. Limitations to below-ground space

___ Utilities marked and noted on sketch
___ Approximate rooting volume for site
Length: ___ Width: ___ Depth: ___

6. Visual Assessment of Existing Plants

a. Species

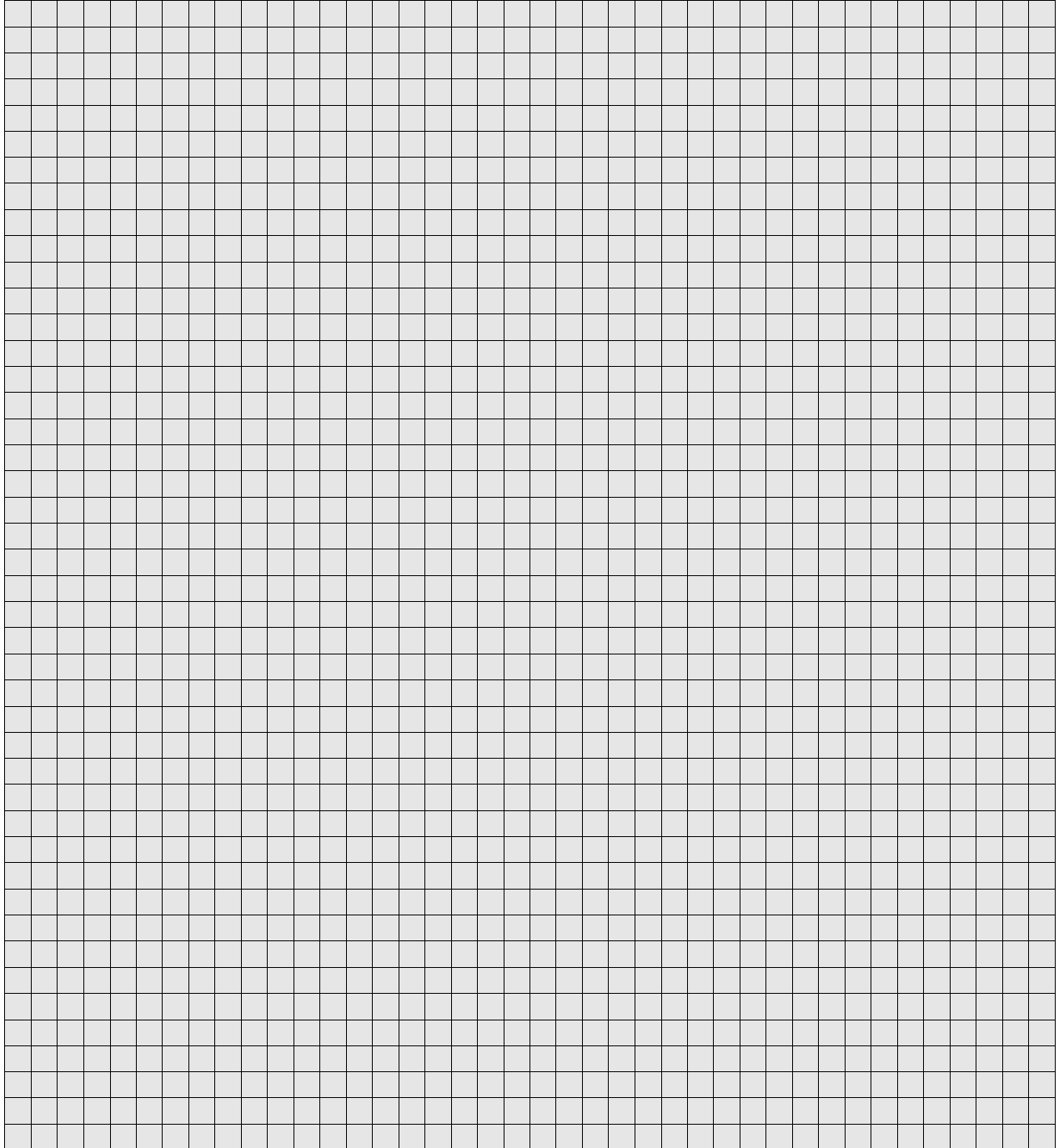
b. Size

c. Growth Rate

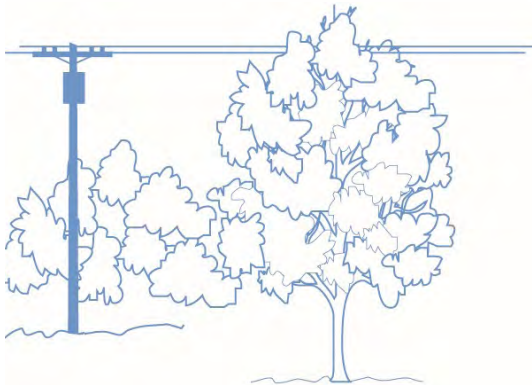
d. Visual Assessment

7. Sketch of Site (does **not** need to be submitted...for your use/reference)

Note north arrow; circulation patterns; pH readings; location of overhead wires, underground utilities, buildings and pavement, as well as problem drainage areas.

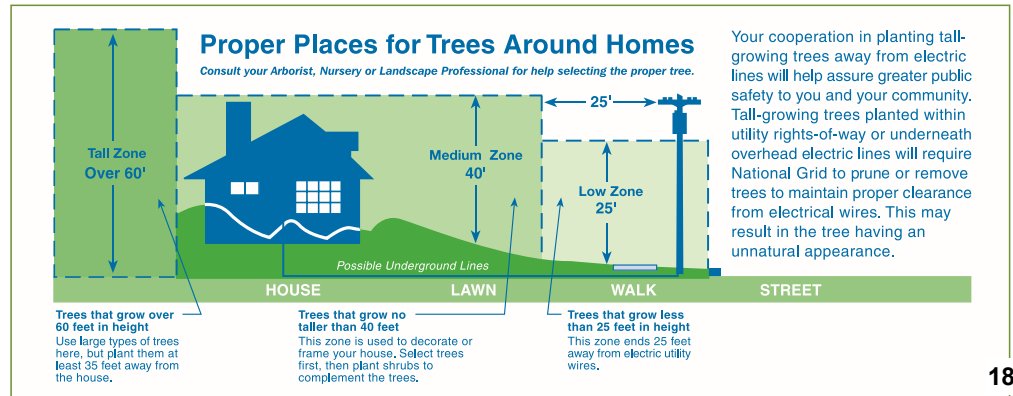


How to avoid tree & utility line conflicts when selecting and planting trees



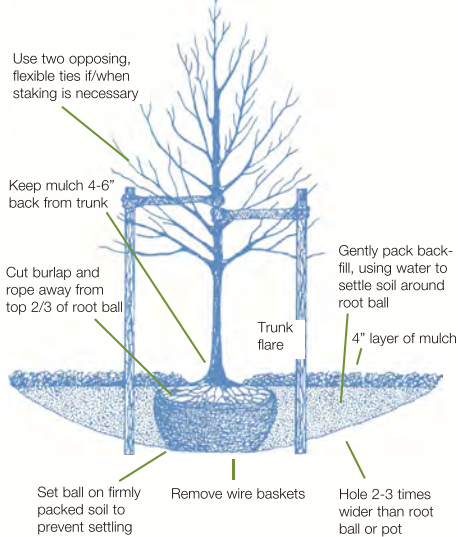
Determining where to plant a tree is a decision that should not be taken lightly. Many factors need to be evaluated prior to planting. Before planting, make sure to consider the tree's full growth potential to see if the location of the tree will affect any overhead or underground utility lines and rights-of-way. The ultimate mature height of the tree to be planted must be within the available overhead growing space. Proper tree species selection and placement will assure the avoidance of or minimize tree and utility line conflicts in the future.

To assist you in making a decision on what type of low-growing tree species to choose, where to place it to avoid potential conflicts and how to plant it properly, National Grid is providing this fact sheet for your use. This will help assure the tree you plant will not only add beauty to your home, your community and benefits the environment, but also contributes to future electric service reliability by avoiding overhead and/or buried lines.



Correct planting instructions

Tree Planting Diagram



1. Dig a shallow hole, 2-3 times wider than the width of the ball/pot, but no deeper than the depth of the ball/pot.
2. Lift and set the tree carefully into the center of the hole on firm soil. **Be sure the top of the trunk flare at the base of the tree is even with grade level, or even 1-2" higher to allow for possible settling. Carefully pull back some soil from the base of the tree to assure the trunk flare and upper layer of roots have not been covered with excess soil. Remove any excess soil back to the original soil level across the top of the ball or pot and raise the ball or pot to the proper level by adding soil to the bottom of the hole.**
3. Straighten the tree and back fill the hole 1/3 of the way. Remove all rope or twine from the base of the tree and top of the root ball; cut and remove the upper 2/3 of the burlap and remove the wire basket. Be sure to remove all plastic/nylon twine and synthetic burlap as this material will not rot away and may strangle tree roots. Plastic pots need to be removed completely while peat pots need only be sliced down the sides. Carefully loosen the outer roots from potted containers.
4. Backfill and pack the soil firmly and uniformly in layers around the hole, watering as you go to settle the soil. It is not necessary to amend the soil or add fertilizers at this time. Use the excess soil to create an earthen berm (low earth wall) around the ball on the surface just past the root ball to help retain water. Apply a 2-4" layer mulch to the entire area under the tree to help maintain moisture, keeping the mulch 4-6" from the base of the tree.
5. Stake the tree for support, only if absolutely necessary, and do so with 2-3 stakes and wide, soft, loose ties which will allow the tree to move with the wind encouraging faster establishment. Water the tree as needed once the upper soil surface has dried well into the Fall. Do NOT cut the main central leader; prune only dead or damaged limbs; do NOT apply tree paints.

For more information, call our Distribution Forestry Department at **315-428-5987**, or visit www.nationalgridus.com.

Before You Dig
Upstate NY
 Dig Safely
 811 or 1-800-962-7962
www.digsafelynewyork.com
 at least two working days prior to excavation

Massachusetts and New Hampshire
 811 or 1-888-344-7233
www.digsafe.com
 72 hours (except weekends and holidays)

Rhode Island
 811 or 1-888-344-7233
 48 hours (except weekends and holidays)

Recommended Small Trees For Planting Under Low Overhead Utility Lines or Confined Spaces
 Urban Trees Recommended for USDA Planting Zones 6 and Below



Common name	Scientific name	Zone	Mature Height**	Crown Shape	Comments
Trident Maple	<i>Acer buergerianum</i>	6a	20'-25'	round	variable Fall color (yellow-red), low branched, requires pruning for street tree use; salt tolerant
	'Street Wise'	6a	20'-25'	oval	can be trained to single stem; new growth reddish-purple at first; burgundy Fall color
Hedge Maple (CU-SS)	<i>Acer campestre</i>	5a	20'-35'	round	adapted to compaction and range of soil Ph; will sustain severe pruning; can become invasive
	'Carnival'	5a	20'-35'		variegated foliage
	'Elegant'	5a	20'-35'	upright	vigorous grower; compact form; ascending habit
	'Elsrijk'	5a	20'-35'	narrow upright	narrow crown form; leaves mildew resistant
	'Evenly Red'	5a	20'-35'		superior red Fall color
	'Field Maple'	5a	20'-35'		more uniform growth habit than species
	'Jade Patina'	5a	20'-35'		dark green leaves; exceptional cold tolerance (not affected by stem frost crack)
	'Louisa Red Shine'	5a	20'-35'		leaves emerge red then fade to reddish-green
	'Metro Gold' (aka 'Panacek')	5a	20'-35'	narrow upright	superior gold Fall color; tighter form than 'Queen Elizabeth'
	'Nanum' (aka 'Compactum')	5a	20'-35'	upright	semi-dwarf, bulbous habit (often grafted on a standard trunk)
	'Postelense'	5a	20'-35'		foliage emerges yellow then matures to green
	'Pulverentum'	5a	20'-35'		variegated foliage
	'Royal Ruby'	5a	20'-35'		new foliage purplish-red
	'Schichtel's Upright'	5a	20'-35'	narrow oval	narrower upright crown form
	'Schwerini'	5a	20'-35'		new purple foliage eventually turns green
	'St. Gregory'	5a	20'-35'	pyramidal	strong central leader, smooth bark; new reddish-green foliage turns a rich, dark green
	'William Caldwell'	5a	20'-35'	fastigate	Fall foliage turns orange/red when planted in acidic soil (not yellow as species)
Miyabe Maple (CU-SS)	<i>Acer miyabei</i>	5a	35-45'	upright oval-round	slow growing, dwarf Sugar Maple with tight conical canopy
	'Rugged Ridge'	5a	35-45'	upright oval-round	more deeply furrowed bark than species; use where taller poles; not likely full height on streets
	'State Street' (aka 'Morton')	4	35-45'	upright oval	good uniform branching, dark green foliage; gold-yellow Fall color
Sugar-Cone' Maple	<i>Acer saccharum</i> 'Sugar-Cone'	3b	<30'	pyramidal	slow growing, dwarf Sugar Maple with tight conical canopy
Amur Maple	<i>Acer tartaricum</i> ssp. <i>ginnala</i>	3a	15'-20'	rounded	often multi-stemmed, but can be trained/specified for single stem; variable Fall color; cold hardy
	'Embers'	3a	15'-20'	rounded	bright red seeds, red Fall color
	'Emerald Fir'	3a	15'-20'	rounded	compact, slow growing; rounded crown
	'Flame'	3a	15'-20'	rounded	red seeds, fiery red Fall color
	'Red Fruit'	3a	15'-20'	rounded	brilliant red seeds
	'Red Rhapsody' (aka 'Mandy')	3a	15'-20'	rounded	lustrous dark green leaves; brilliant red Fall color
	'Rugged Charm'	3a	20-28'	upright oval	15' crown width; compact form; yellow-orange to red Fall color; clusters of white flowers in Spring
	'Beethoven'	4	20'-25'	narrow columnar	10' crown width, central leader; red/yellow Fall color
	'Mozzart' (aka 'Mozart')	4	15'-20'	oval	15' crown width, central leader; red/yellow Fall color; red samaras
Serviceberry	<i>Amelanchier</i> spp.	3b	20'-30'	oval	edible fruit, early white flowers, red to yellow Fall color; can be small tree to large multi-stem shrub
	'Autumn Brilliance'	3b	15'-25'	oval	heavy flowering, bright red-orange Fall color; excellent heat/drought tolerance; resists leaf spot
(possible <i>A. lamarkii</i> selection)	'Ballerina'	3b	15'-25'	upright	spreading branches; pendulous flowers; bronze Spring leaves turning dark, glossy green
	'Cole's Select'	3b	15'	rounded	15' wide crown; glossier, smaller green leaves; orange-red to red Fall color

...continued

Common name	Scientific name	Zone	Mature Height**	Crown Shape	Comments
	'Cumulus'	3b	15'-25'	columnar-pyramidal	12-18' wide crown; faster growing; yellow to orange-scarlet Fall color; may root sucker
	'Princess Diana'	3b	25'	oval	bright red, long lasting Fall color; may be single or multi-stemmed
	'Robin Hill'	3b	20'	narrow	12-15' wide crown; heavy flowering, pink buds, early bloomer; bronze tinged leaves
	'Rubescens'	3b			pink flowers in Spring
(possible <i>A. canadensis</i> cultivar)	'Spring Flurry'	3b	25-30'	upright oval	15' wide crown; strong central leader; green Summer foliage; orange Fall color
	'Reflection' (aka 'Refzam')	3b	25'	upright oval	20' wide crown; vigorous growth and similar traits as the species
(possible <i>A. laevis</i> cultivar)	'Majestic'	3b	25-30'	narrow oval	vigorous growth; new dark, reddish-orange foliage turning to dark green; heat resistant
(possible <i>A. canadensis</i> cultivar)	'Tradition' (aka 'Trazam')	3b	25-30'	oval	good branching, strong center leader; heavy fruiting; grey-green foliage; good early bloom
American Hornbeam	<i>Carpinus caroliniana</i>	3b	30'	rounded, spreading	"muscled" bark, good orange-red Fall color; slow to establish; difficult to transplant; native
	'Ball O' Fire' (aka 'J.N. Globe')	3b	15'	rounded	15' wide crown; compact; superior Fall color
	'Firespire' (aka 'J.N.Upright')	3b	20'	upright, narrow	10' wide crown; tight, upright form; impressive orange-red Fall color
	'Native Flame'	3b		upright oval	notable bright red Fall color
	'Palisade'	3b	25'	narrow, upright oval	12' wide crown at maturity; dense, tidy growth habit
Eastern Redbud (CU-SS)	<i>Cercis canadensis</i>	5b	20'-35'	open, spreading	edible, pink, very early Spring flowers; typically multi-stemmed; heart shape leaves; native
	'Ace of Hearts'	5b		rounded	compact form, dense dome-shaped canopy; semi-glossy leaves; zig-zag stems
	'Alba'	5b	20'	open, spreading	white flowers
	'Appalachian Red'	5b		open, spreading	magenta pink buds, dark reddish-pink flowers
	'Flame'	5b		open, spreading	double flowered
	'Forest Pansy'	5b-6	20'	open, spreading	typically smaller, slower growth; cold sensitive; red-purple Spring leaves, bronze Summer foliage
	'Hearts of Gold'	5b		open, spreading	new leaves emerge red then turn chartreuse then fade to green
	'Northern Strain'	5a		open, spreading	more cold hearty; limited availability
	'Rising Sun'	5b		open, spreading	similar to 'Hearts of Gold', more colorful; new leaves red, fading to orange to yellow to green
	'Royal White' (aka 'Royal')	5b		spreading	white flowers, earlier blooming; more compact; larger flowers than 'Alba'
	'Ruby Falls'	5b		weeping	purple foliage; weeping form
	'Silver Cloud'	5b		spreading	irregular, splotchy variegated foliage;
	'Whiters Pink Charm'	5b		open, spreading	brighter pink flowers than the species
Corneliancherry Dogwood (CU-SS)	<i>Cornus mas</i>	5a	20'	round - oval	multi-stemmed; showy early small yellow flowers; heavy fruiting (litter may be a nuisance!)
	'Alba'				white fruit
	'Aurea'				gold to chartreuse maturing foliage
	'Flava'				yellow fruit
	'Golden Glory'		20'	oval	heavy bloomer, larger fruit; red-purple Fall color; not as hardy as others forms
	'Variegata'				white variegated foliage
	'Aureo-Elegantissima' (aka 'Tricolor')				leaf edges bordered in yellow, green and pink
	'Fructu Volcano'				purple fruits

...continued

Common name	Scientific name	Zone	Mature Height**	Crown Shape	Comments
	'Macrocarpa'				larger fruits
American Smoketree	Cotinus obovatus	5b	20'-30'	oval -round	low branching, multi-stemmed tree; 6-10" light, puffy, pyramidal Spring flower; blue green foliage
	'Red Leaf'				superior, reliable Fall color
	'Grace'	5b	20'	round	more tree-like form; maroon to purple foliage; (can be spec'd for multi or single stemmed tree)
Thornless Cockspur Hawthorn (CU-SS)	Crataegus crus-galli inermis	4a	20'-25'	round	white flowers, bright red persistent fruit; thornless
	'Cuzam' (aka 'Crusader')		15'	round	faster growing; 12-15' wide; reportedly disease resistant
Washington Hawthorn (CU-SS)	Crataegus phaenopyrum	4b	20'-30'	round	white flowers; thorny; reddish-purple Fall color ; insect & disease prone; 'usually' multi-stem
	'Fastigata'		30'	columnar	columnar habit; 20' wide crown
	'Princeton Sentry'		30'	columnar	similar to 'Fastigata' but nearly thornless
	'Vaughn'		20'-30'	oval	hybrid cross with C. crus-galli; long lasting red fruit; prone to rust disease
Winter King Hawthorn (CU-SS)	Crataegus viridis 'Winter King'	5a	20'-30'	oval	thorny, white flowers, purple and scarlet Fall color, fruit persists; more disease resistant
Imperial Thornless Honeylocust (CU-SS)	Gleditsia triacanthos inermis 'Impcole'	4b	30'	broad round	open, spreading form; good branch angles; small leaves; yellow Fall color; only short variety
Goldenraintree (CU-SS)	Koelreuteria paniculata	5b	30'-40'	irreg. rounded	pest free; pyramidal, mid-Summer, yellow flower clusters; specify straight stem when ordering
	'Rose Lantern'		30'-40'	irreg. rounded	pink fruits
	'September'		30'-40'	irreg. rounded	later flowering
	'Summerburst'		30'-40'	irreg. rounded	foliage more glossy; better crown symmetry & heat resistance than species
Amur Maackia (CU-SS)	Maackia amurensis	4a	20-30'	rounded upright	4-6" long white pendulous flower clusters; grey-green leaves turn to olive green; pest free
	'MaacNificent'		20-30'	vase like	vigorous, upright branching; silvery, pubescent foliage in Spring
	'Starburst'		20-30'	rounded upright	denser crown, more uniform & vigorous than species
	'Summertime'		18-20'	rounded upright	smaller than the species 12-15' wide crown
Flowering Crabapple (CU-SS)	Malus spp.	4b			various cultivars (some may be disease resistant):
	'Adams'	4a	20'	round	buds deep pink, flowers deep pink, profuse; leaves green with a red tint; 5/8" persistent red fruit
	'Adirondack'	4	18'	vase	carmine buds to white flowers; bright red fruit 1/2" diameter, dark green leathery leaves
	'American Salute'	4	18'	upright oval	rose-red flower, cherry red 3/8" fruit; maroon-red foliage; 10' wide crown
	'American Spirit'	4	15-18'	round	red buds, rose-red flower, persistent red fruit; 15-18' wide crown; superior disease resistance
	'American Triumph'	4	20'	upright columnar	dark red single flower, dark burgundy-red fruit; reddish-purple leaves; 12' wide crown
	baccata 'Jackii'	3a	20'	round	flowers are white fragrant and early, fruit is deep red-purple; glossy green foliage
	'Cardinal'	4	16'	broad spread.	flowers bright pink-red purple, 1/2" sparse fruit deep dark red, leaves deep glossy purple-red
	'Centurion'	4	20'	narrow oval	flowers rose red, bright red persistent 5/8" diameter fruit, leaves reddish changing to green
	'Coralburst'	4	15'	round	coral pink buds, double rose flowers, bronze 1/2" diameter fruit; resistant to most diseases
	'Donald Wyman'	4	20'	round	pink buds, flowers white, abundant, 3/8" fruit glossy bright red, abundant
	'Doubloons'	4	18'	dense oval	carmine buds, flowers white, double fruit 3/8" bright lemon-yellow, abundant; deep green foliage
	'Firebird'	4	8'	round spreading	red buds, flowers white, fruit 3/8" bright red & very persistent, abundant; dwarf of 'Sargent'
	floribunda	4b	20'	round	flowers pink fading to white, profuse, 1-1 1/2" diameter, fruit yellow-red; disease resistance
	'Golden Raindrops'	4	20'	vase like	white buds & flowers; 1/4" diameter yellow fruit; fine textured, deeply cut foliage

...continued

Common name	Scientific name	Zone	Mature Height**	Crown Shape	Comments
	'Harvest Gold'	4	22'	wide vase like	white buds & flowers; 1/2" diameter yellow fruit; fair scab & fire blight resistance
	'Liset'	4a	15'	columnar	flowers pink-red 1 1/2" diameter, fruit dark red, leaves reddish
	'Madonna'	4	20'	upright	pink bud to double white flower; fruit golden red; leaves emerge bronze to green; disease resistance
	'Ormiston Roy'	4a	20'	oval - round	pink-rose bud, white flower, yellow 3/8" diameter persistent fruit, green leaf
	'Pink Princess'	4	8'	low, spreading	rose pink flower, deep red 1/4" fruit; purple foliage becoming bronze-green; disease resistance
	'Prairifire'	4	20'	oval - round	crimson bud, pink-red flower, orange-red persistent 1/2" fruit, leaves age to red-green
	'Professor Sprenger'	4	20'	oval - round	pink bud, white fragrant flower, orange-red persistent 1/2" diameter fruit, green leaf
	'Purple Prince'	4	20'	round	carmine bud, rose red flower, persistent maroon 3/8" fruit, purple-bronze leaf
	'Red Jewel'	4	15'	oval	pink-white bud, white flower, persistent bright red 1/2" diameter fruit, green leaf
	'Robinson'	4	25'	oval	crimson bud, deep pink flower, dark glossy red 3/8" fruit, red aging to bronze leaf
	'Royal Raindrops'	4	20'	upright spread.	pink bud, bright pinkish flower; persistent red 1/4" fruit; purple cut-leaf, orange-red Fall color
	'Sentinel'	4	18'	narrow oval	red buds, white-pink flower, persistent bright red 1/2" fruit, dark green glossy leaf
	'Silverdrift'	4	20'	round	pink buds, white-pink flower, persistent orange 3/8" fruit, bright green glossy leaf
	'Snowdrift'	4	18'	narrow oval	red buds, white flower, small persistent red fruit; good disease resistance
	'Strawberry Parfait'	4	18'	vase	red buds, large pink flower, yellow 3/8" fruit, red aging to green leaf
	'Sugartyme'	4	18'	oval	pink bud, white fragrant flower, red persistent 1/2" diameter fruit, green leaf
	x zumi 'Calocarpa'	4a	20'	round	bright red, persistent 3/8" diameter, leaves large green, dense canopy
Hop Hornbeam	<i>Ostrya virginiana</i>	3b	30-50'	oval	pest free; slow growing; yellow Fall color; tolerates some shade; grayish-brown, exfoliating bark; use only where taller pole/wire sites; Northeast native
Persian Parrotia (CU-SS)	<i>Parrotia persica</i>	5	20'-30'	pryra.-round	relatively pest free; red-purple new foliage to green in Summer, yellow-red in Fall
Accolade Flowering Cherry	<i>Prunus 'Accolade' (P. sargentii x P.subhirtella)</i>	5a	20'-25'	round-vase	deep rose-pink bud, semi-double pink flowers, attractive bark; more disease resistant
Snow Goose Cherry	<i>Prunus 'Snow Goose'</i>	5	20'-25'	upright	white flowers, foliage green aging to yellow-red in Fall; 1/4" blue-black fruit; good disease resistance
Edgewood Callery Pear (CU-SS)	<i>P. calleryana x P. betulaeifolia 'Edgedell'</i>	4	30'	round	leaves emerge with purple tint, silvery green through Summer, red-purple in Fall
Jack Callery Pear (CU-SS)	<i>Pyros calleryana 'Jaczam'</i>	4	15'-20'	oval; dense	glossy green to gold-red leaves in Fall; 1/2" yellow-green fruit
Jill Callery Pear (CU-SS)	<i>Pyrus calleryana 'Jilzam'</i>	4	15'-20'	round	olive green to gold leaves in Fall; 1/2" yellow-green fruit
Valiant Callery Pear (CU-SS)	<i>Pyrus calleryana 'Valzam'</i>	4	25'-30'	upright-pyram.	glossy hunter green to crimson red leaves in Fall; 1/4" tan fruit
Black Locust (CU-SS)	<i>Robinia pseudacacia 'Globe'</i>	4b	20'	round; dense	late Spring flowering (possibly flowerless); spineless; medium to blue-green leaves
	'Bessoniana'	4b	30'	oval	late Spring flowering; essentially spineless; medium to blue-green leaves; central leader
	'Umbraculifera'	4b	20'	umbrella-like	dwarf form; few-no thorns, sparsely flowered; prone to borers & ice damages
Swedish Mountain Ash (CU-SS)	<i>Sorbus intermedia</i>	5b-6a	25-35'	round	green upper leaf/grayish white undersides; orange-red Fall color
Columnar Oakleaf Mountain Ash (CU-SS)	<i>Sorbus thuringiaca</i>	3b	25-35'	oval-pyram.	dark green upper leaf/whitish undersides; rusty orange-yellow Fall color
	'Fastigiata'	3b	25-35'	narrow pyram.	more narrow pyramidal crown form
Japanese Tree Lilac (CU-SS)	<i>Syringia reticulata</i>	3a	20'-25'	oval	large cream colored flowers in late June; good for use in large containers

...continued

Common name	Scientific name	Zone	Mature Height**	Crown Shape	Comments
	'Ivory Silk'	3a	25'	round	dense; compact; heavy flowering; fast growing; cherry-like bark
	'Regent'	3a	20'-25'	upright	glossy leaves; heavy pure white flower producer
	'Snowcap'	3a	15-20'	rounded	compact for; heavy creamy-white flowers
	'Snowdance'	3a	25'+	upright	very dark, glossy leaves; blooms earlier than species; no seed head production
	'Summer Snow'	3a	16'	round	glossy leaves; heavy flowering
Summer Sprite Littleleaf Linden (CU-SS)	<i>Tilia cordata</i> 'Halka'	4	15'-20'	narrow pyram.	may grow slower than the species; fragrant, mid-Summer flowers (attracts bees!)
Wireless Japanese Zelkova (CU-SS)	<i>Zelkova serrata</i> 'Schmidtlow'	5	35'	broad vase	exfoliating bark; less likely than species to have poor branch structure; Elm-like appearance
	'City Sprite'	5	20'	upright	as above, smaller in form; red Fall foliage

* Trees over 30' in mature height should be planted at least 25' away from the edge of overhead wires; trees that mature over 25' and planted directly underneath electric conductors may require minor pruning in the future to avoid wire conflicts to maintain required clearances

(CU-SS = Trees suitable for planting in Cornell University Structural Soil mix)

Tree list summarized from RECOMMENDED URBAN TREES: SITE ASSESSMENT AND TREE SELECTION FOR STRESS TOLERANCE; 2015 (revised) Urban Horticulture Institute, Dr. Nina Bassuk, Deanna Curtis, B.Z. Marranta & Barb Neal; Cornell University, 134-A Plant Science Bldg., Ithaca, NY 14853 nlb2@cornell.edu; urbanhort@cornell.edu

For more information and pictures of these trees, please go to the Cornell Woody Plant Database at: <http://woodyplants.cals.cornell.edu>

For more information, call our Distribution Forestry Department
at **315-428-5987**, or visit www.nationalgridus.com.

MUNICIPAL ENDORSEMENT FOR USE WHEN APPLICANT IS A NOT-FOR-PROFIT ORGANIZATION

Resolution No.: _____

WHEREAS, the *(insert Not-For-Profit Name)* is applying to **Niagara Mohawk (dba National Grid)** for the “**10,000 Trees...And Growing!**” tree planting reimbursement program to be located *(insert location)*, a site located within the territorial jurisdiction of this *(Board, Council or Legislature)*; and

WHEREAS, as a requirement under the rules of these programs, said not-for-profit corporation must obtain the “approval/endorsement of the governing body of the municipality in which the project will be located”,

NOW, THEREFORE, be it resolved by this august body that the *(Board, Council or Legislature)* of *(municipality)* hereby does approve and endorse the application of *(Not-For-Profit group)* to apply for contributory reimbursements under the “**10,000 Trees...And Growing!**” program for a project known as *(project title)* and located within this community.

Date of Adoption _____

Certification of Clerk _____