

ALBANY COUNTY PARCELS WITHDRAWN FROM FORECLOSURE *

Parcel Address – 617 19th St.

Municipality – City of Watervliet

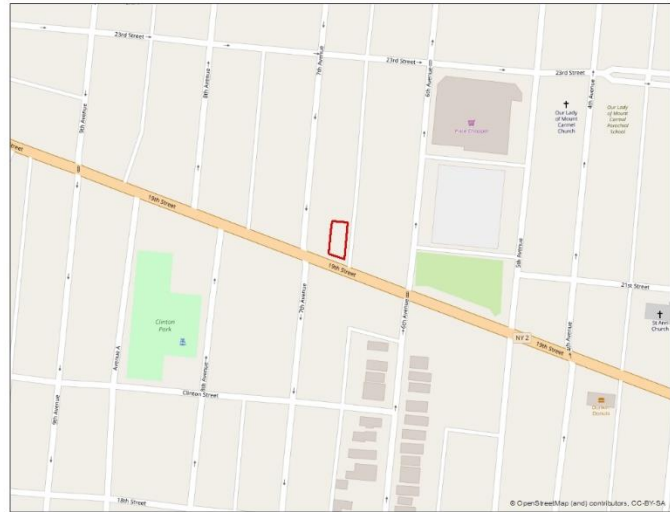
Tax Map ID – 32.50-4-28

Property Class – One Story Small Structure

Land Assessment - \$46,400

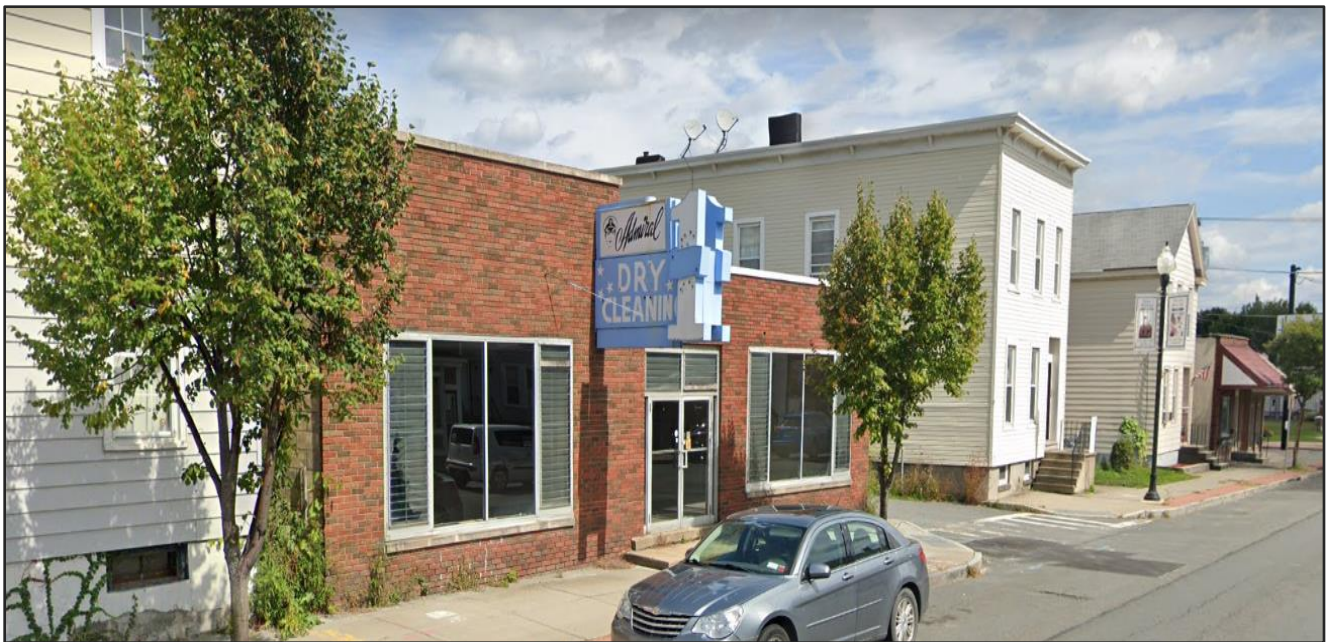
Total Assessment - \$169,100

Acres – .17



[Explore on the County's Interactive Map](#)

[Map of selected commercial properties withdrawn from foreclosure](#)



Daniel P. McCoy, Albany County Executive