



Albany County Sheriff's Office Critical Incident Emergency Management Unit

June 2022

Critical Incident/Emergency Management Unit

This is the monthly newsletter for the Albany County Sheriff's Office Critical Incident Emergency Management Unit. **If you have events that you would like posted in this newsletter please email them to the Fire Coordinator's office.**



Tech Rescue in Thacher Park

In this issue

The Albany County Sheriff's Office Search & Rescue Team

Recruitment and Retention

Events

Training

Office of Emergency
Management

P.O. Box A
58 Verda Ave.
Clarksville, NY
12041

Ph: (518) 720-8025
Fax: (518) 720-8031



Albany County Sheriff's Office Critical Incident Emergency Management Unit

June 2022

ALBANY COUNTY SHERIFF'S OFFICE SEARCH AND RESCUE TEAM

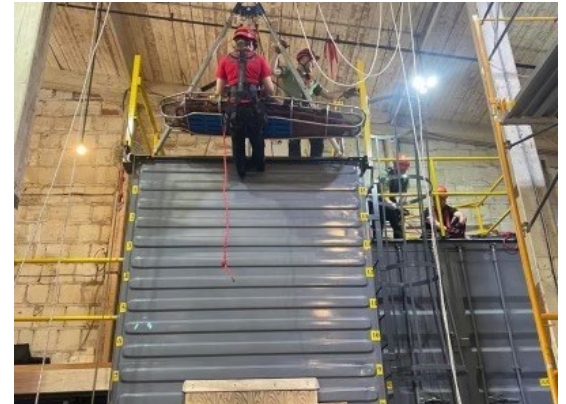
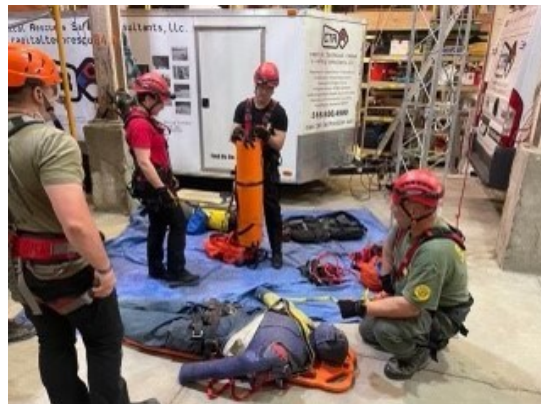
The Albany County Sheriff's Office has provided Technical Rescue since the early 1990s with the formation of our Search and Rescue Team (SRT). This has been comprised of approximately 24 Sheriff Deputies and Paramedics providing technical rescue in the areas of High and Low Angle Rope Rescue, Wilderness Search and Rescue, Cave Rescue, Ice Rescue, and Swift Water Rescue. We have also been part of area Confined Space Rescue Teams. Our members all have Rescue Technician Basic or equivalent and we have several members at operations and technician levels in the various disciplines. Our Team has one commander and four team leaders and is available to respond anywhere in the county and beyond if requested.

Through the years the SRT has been involved in many high profile technical rescues. Almost all of them have taken place at the John Boyd Thacher State Park with our most recent being a 60 hour search and then a 4 hour complex rescue of a male who jumped off the Overlook in January. He was found alive after 60 hours of sub-freezing temperatures and was lifted to the top of the cliff using three different rope systems to first get him back up to the bottom of the cliff and then up to the top of the cliff.

We are fortunate to have a good relationship with local first responders who are always willing and able to respond to provide extra assistance when needed.

The Team was offered a rare training opportunity during the month of May. A huge thank you to the folks at Capital Technical Rescue & Safety Consultants (Albany, New York). CTR focuses on rescue stand-by, consultation, and training for technical rescue and provides support for government and private industries. CTR allowed our team to use their training facility to do some in service training: raising/lowering/belay techniques, litter attendant work, patient packaging and system setups. This allowed our team members a new, safe training site and put their skills to the test.

Our team trains monthly, training topics vary depending upon the season and available training sites. We anticipate some additional training this summer at the New York State John Boyd Thacher State Park. We are currently researching the possibility of more training to add additional skills to our arsenal.



Office of Emergency
Management

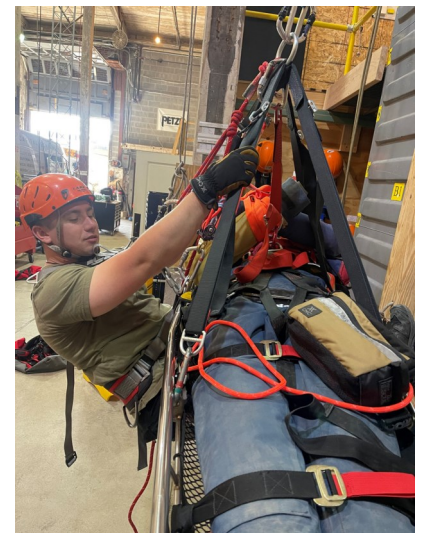
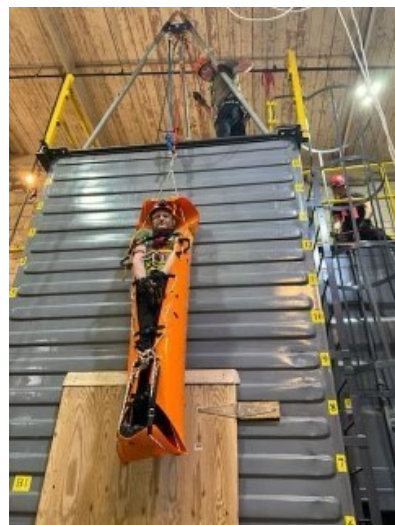
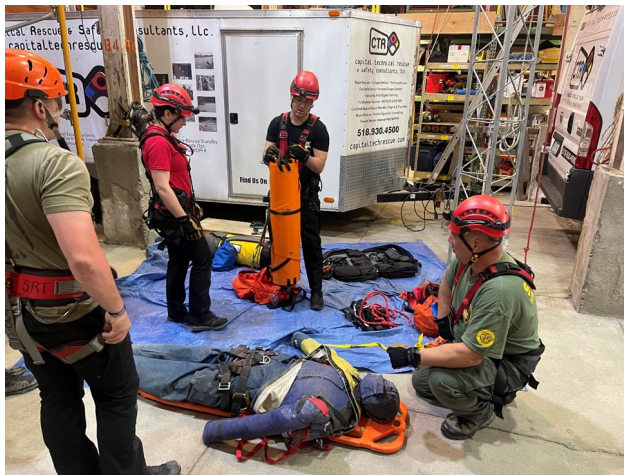
P.O. Box A
58 Verda Ave.
Clarksville, NY
12041

Ph: (518) 720-8025
Fax: (518) 720-8031



Albany County Sheriff's Office Critical Incident Emergency Management Unit

June 2022



Office of Emergency
Management
P.O. Box A
58 Verda Ave.
Clarksville, NY
12041

Ph: (518) 720-8025
Fax: (518) 720-8031



Albany County Sheriff's Office Critical Incident Emergency Management Unit

June 2022

Fire Rescue 1 by Lexipol Dalan Zartman

Over the edge: Common rope rescue challenges with transitioning edges

The first step is often the hardest, namely due to issues with maintaining control over the movements and protecting the gear

Apr 18, 2022

I've rigged in my rope system and made my way to the edge. Now comes the moment of truth, transitioning from the safety of a working platform or surface over the edge and into my descent mode. This is a foundational skill for rope rescue but one that often serves as a key cause of injury to rescuers as well as patients.

For this discussion, let's focus on personal rope skills for descending or rappelling over the edge. The same concepts we discuss here can be applied to a fixed brake system where a rescuer is being lowered.

Transitioning from the safety of a working platform or surface over the edge and into descent mode is a foundational skill for rope rescue. (Photo/Dalan Zartman)

DETAILING A PROPER EDGE TRANSITION

To get started, let's establish a baseline for what a proper edge transition might look like. In this scenario, with a moving brake, the rescuer connects the main line to their descent control device (DCD) and their belay device to the belay line. Safety checks are completed, and verbal commands are initiated and acknowledged to reflect a rescuer is on rope and preparing to deploy.

The equipment is most likely a Petzl ID or CMC Clutch on the main line with a Petzl ASAP on the belay line. These devices should be positioned just beyond the edge so that they don't side

Office of Emergency
Management

P.O. Box A
58 Verda Ave.
Clarksville, NY
12041

Ph: (518) 720-8025
Fax: (518) 720-8031



Albany County Sheriff's Office Critical Incident Emergency Management Unit

June 2022



load in the case of a slip or fall. However, the top side may not afford this option, and the rescuer may be required to “descend” to the edge.

Once the rescuer is at the edge, they get into an athletic position and begin easing backward by manipulating their DCD. A good operator will not be choking the rope and will trust the design and performance of their gear, using proper technique and hand positioning to adjust the amount of friction applied to the device. The rescuer will move their body position backward and away from the edge, with their feet staying anchored as a pivot point.

Once the rescuer has the proper angle to deploy fully over the edge and down the wall, the feet become mobile and deliberate, controlled steps are taken down the wall. The speed and significance of the steps should be directly married to the DCD manipulation to maintain proper body position. If the rescuer is too upright and does not lean back enough, the result will most likely be a wash out and may cause the rescuer to slip face first into the wall or edge. If the rescuer continues to drive backward and fails to move their feet at the right time, the likely result will be inversion. These are obviously undesired outcomes and often result in injuries and damage to gear.

So, what makes the infamous “edge transition” difficult?

Once the rescuer is at the edge, they get into an athletic position and begin easing backward by manipulating their DCD. (Photo/Dalan Zartman)

IDENTIFYING THE CHALLENGES: CONTROL AND GEAR-PROTECTION

The hardest part of negotiating an edge is the transition from a standing position at the launch point to a vertical rappelling position on a wall – or without a wall to work off in the case of a bridge or outcropping. The challenges are primarily maintaining control over the movements and protecting the gear.



Albany County Sheriff's Office Critical Incident Emergency Management Unit

June 2022



One of the key variables that can make a transition extremely difficult is the location of the anchor or the system base. Low anchors create tremendous tension and hard-to-manage angles for the rescuer to apply proper gear management and control. This use to be a staple in our instructional requirements. However, after witnessing even advanced students continually struggle with maintaining control using low anchors, we universally abandoned this as a technical need.

If the system requires a low anchor, simply deploy a climbing etrier. This can be a manufactured product or one that can be quickly assembled with webbing or cordage, essentially a series of foot loops tied into a section of hardware that is properly anchored on the top side. This implement allows the rescuer to rig into their system and then simply sit on the edge, place their feet into the foot loops and “climb” down until the load the system. This should be accomplished with one to two steps maximum if you properly pretension the system. This approach significantly reduces the risk for inversion or foot slips when rescuers wash out or deploy prematurely without leaning back.

Conversely, using a high-directional anchor allows rescuers to negotiate edges with ease due to the elimination of a significant angle transition and all the tension that comes with that concept.

Experience also plays a tremendous role in developing a sense of the proper body position and when to reposition the feet. Experience is also essential with gear management, which requires an awareness of rope position, edge protection and proper manipulation of the DCD. As the rescuer transitions over the edge, it is critical to ensure that the ropes end up on the edge protection. This is particularly important when very precise edge protection is being used, such as a compact edge roller.

Very controlled movement with the DCD will be managed by keeping the control hand near the device and using both the hand position and rope angle as well as the friction

Office of Emergency
Management

P.O. Box A
58 Verda Ave.
Clarksville, NY
12041

Ph: (518) 720-8025
Fax: (518) 720-8031



Albany County Sheriff's Office Critical Incident Emergency Management Unit

June 2022



adjustment of the device to finitely control rope movement. Choking the rope, mismanagement of the device, and poor hand positioning will cause excessive fatigue of the forearms and hands and often result in uncontrolled movement.

The hardest part of negotiating an edge is the transition from a standing position at the launch point to a vertical rappelling position on a wall – or without a wall to work off in the case of a bridge or outcropping. (Photo/Dalan Zartman)

IDENTIFYING A SOLUTION: SINGLE-LEG POSITIONING

Over the last several years, we have refined our instructional delivery to develop better skills for ourselves and our students. We expend a lot of time and attention on foot movement and device control.

The key that I have identified to transitioning edges with confidence and control is refining the ability to do single-leg positioning. What does that mean? Single-leg positioning is the ability to balance on one leg with control. This is an important skill because it allows a rescuer to choose the placement of each foot or step selectively and methodically while maintaining control. This does not mimic the rapid-fire “step-step” technique that many use. The single-leg concept is practiced in ground school and then applied on the edge.

APPLYING THE SOLUTION: STEP BY STEP

Here's a step-by-step guide to a successful edge transition training:

- When you are transitioning the edge, stop playing rope through the DCD when your body position is between 30 and 45 degrees.
- Shift one foot toward the center line of your body, put a slight bend in your knee, and then slowly lift the other foot off the edge. Keep that foot near the edge initially in case you need to restabilize.
- Bend the loaded knee repeatedly, bringing your body in and out from the edge and controlling your body position.

Then switch to the other foot.



Albany County Sheriff's Office

Critical Incident Emergency Management Unit

June 2022

Once you have completed your practice and demonstrated proficiency, you can now apply this technique as you complete the transition. Here's how it plays out:

- Instead of making a lightning-quick "step-step," simply load one leg, identify the location that you want to place your other foot for the step down, and gradually allow rope to move through the descent control device while bending the loaded knee. This will naturally place the step-down foot right where you want it.

Then load the new leg and repeat the process.

In many environments, foot placement is critical as it can displace rocks, result in foot entrapments, damage surface objects in industrial settings, or cause other unfortunate outcomes. Far too often, we don't consider these types of surfaces if we are consistently training on training towers and not getting out into the field.

FIXED-BRAKE SYSTEM APPLICATIONS

To provide some summary context for a fixed-brake system where you are being lowered, all of the same principles and techniques apply. The big variable is communications. Remember that the operator managing the DCD cannot feel what you feel or see what you see.

To control your speed and movement, you must conduct somewhat of a "dance" with the operator that only works through communication. Keep your communications concise and short. "Lower Slow," "Lower Fast" and "Stop" should be the only communications you need when heading down.

As a rule of thumb, this edge transition should be slower simply because of the delay caused by communicating actions and the need to err on the side of control and caution.

DRIVE HOME THE CONCEPTS

Make sure you watch the video to help drive these concepts home. We would love to hear your feedback and hope this makes an impact, particularly if you're struggling with edge transitions.

Office of Emergency
Management

P.O. Box A
58 Verda Ave.
Clarksville, NY
12041

Ph: (518) 720-8025
Fax: (518) 720-8031



Albany County Sheriff's Office Critical Incident Emergency Management Unit

June 2022

Recruitment and Retention

Below are pictures of the R&R car at the Voorheesville Memorial day parade. We had the car in both the Maplewood and Voorheesville parades, Friday and Saturday. There was a really good spectator turnout in Voorheesville, I estimate 1,000-1,200, the streets lined on both sides for much of the route. There were many good comments from the spectators. It was very worthwhile doing both parades. I got to talk to a group of young people and encouraged them to stop at the Voorheesville Fire Department to talk about volunteering.



Chief Paris was at the Family appreciation day at the Watervliet Arsenal along with other members of the Sheriff's Office and our retention and recruitment car.



Office of Emergency
Management
P.O. Box A
58 Verda Ave.
Clarksville, NY
12041

Ph: (518) 720-8025
Fax: (518) 720-8031



Albany County Sheriff's Office Critical Incident Emergency Management Unit

June 2022

Raider Fest

On May 21st the Sheriffs' Office had a display at South Colonie High Schools raider Fest that included Emergency Management / Fire Coordinator's Office. Our Tactical training trailer was on display and it was a big attraction for the youth in attendance this display was tied into our Fire Fighter Recruitment efforts.



Office of Emergency
Management
P.O. Box A
58 Verda Ave.
Clarksville, NY
12041

Ph: (518) 720-8025
Fax: (518) 720-8031



Albany County Sheriff's Office
Critical Incident Emergency Management Unit

June 2022

78th YEAR

punkintown
 **FAIR**

ROUTE 85A NEW SALEM, NY

JULY 21, 22, 23

STARTING AT 6:00 PM

RIDES • GREAT FOOD • GAMES



Photo courtesy of Dylan Longton

OWNED AND OPERATED BY

NEW SALEM VOLUNTEER FIRE DEPARTMENT

Office of Emergency
Management

P.O. Box A
58 Verda Ave.
Clarksville, NY
12041

Ph: (518) 720-8025
Fax: (518) 720-8031

Sponsored by:





Albany County Sheriff's Office Critical Incident Emergency Management Unit

June 2022

40th Annual Town of Colonie *Firefighters Golf Tournament*

Dear Firefighter Supporter,

The Town of Colonie Firefighters will host their annual golf tournament on Friday, August 19th, 2022 at the Town of Colonie Golf Course. This will be the Firefighters 40th Annual Golf Tournament. The Firefighters golf committee by way of this letter invites local business and civic minded individuals to support this event and help them to provide assistance to needy people and families who have suffered a catastrophic fire loss or are in need of help. Over the past several years we have contributed over \$25,000 to this special fund and we owe it all to generous sponsors like you, who support our tournament.

The Covid Pandemic has affected every American over the last two years and it certainly has put the Fire Service and EMS Service to a test. The Volunteer Firefighters in the Town of Colonie were up to the task and our Fire Service and EMS Service went uninterrupted. We were challenged to meet all NYS Covid protocols and still meet the needs of the residents of the Town of Colonie while at the same time protecting our Volunteers from becoming infected and we were able to achieve that goal. The Fire Service also continues to be called upon to do more to be prepared in case something like 9/11 strikes us again. In the past we have also dealt with natural disasters such as hurricane Irene and hurricane Sandy. The dedicated volunteer individuals that make up the Town of Colonie Fire Departments are continuing to meet these challenges.

The 12 fire departments in the Town of Colonie are located in the hamlets of Boght Corners, Colonie Village, Fuller Road, Latham, Shaker Road-Loudonville, Maplewood, Menands, Midway, Schuyler Heights, Stanford Heights, West Albany and Verdoy. They are all comprised of Volunteers, who give their time and commitment providing the highest level of fire and emergency medical service available. These dedicated men and women are committed to making our community a safer place to live, work and raise our families. The quality of life in Colonie is enhanced through all they do.

The annual golf tournament affords the opportunity for all the firefighters to come together and share in a fun-filled event. More importantly, it allows us the opportunity to raise money and support the fire victims and families in need of the fund. With your generous donation we will be able to continue to provide funding for this needy project.

Please take a moment to review the enclosed information describing all of the different sponsor levels available. We have added a Platinum Sponsor for businesses that may want to include a foursome in the tournament. By contributing, you can show the Volunteers how much you appreciate the services they provide and also support their charitable cause. Simply select your level of participation, complete the attached form and return by June 30, 2022. On behalf of all the volunteer firefighters I thank you for your interest and support.

Randy Kunker - Chairman
518-857-4317

Town of Colonie Firefighters
40th Annual Golf Tournament
P0 Box 1231
Latham, New York 12110

Office of Emergency
Management
P.O. Box A
58 Verda Ave.
Clarksville, NY
12041

Ph: (518) 720-8025
Fax: (518) 720-8031



Albany County Sheriff's Office Critical Incident Emergency Management Unit

June 2022

TOWN of COLONIE FIREFIGHTING

Sponsor Category

- **PLATINUM SPONSOR**
 - Corporate name/logo printed on golfers promotional gift
 - Sponsor banner and tee sign prominently displayed throughout the day
 - Front and back cover advertisement of tournament program book
 - Keepsake Golf flag
 - Foursome in tournament

..... At \$2000.00
- **GOLD CORPORATE SPONSOR –**
 - Corporate name/logo printed on golfers promotional gift
 - Sponsor banner and tee sign prominently displayed throughout the day
 - Front and back cover advertisement of tournament program book
 - Keepsake Golf Flag”

..... At \$1500.00
- **CORPORATE SPONSOR –**
 - Sponsor banner to be prominently displayed throughout the day
 - Banner and tee sign produced by tournament committee
 - Full page advertisement in tournament program

..... At \$500.00
- **LUNCHEON SPONSOR –**
 - Sponsor sign to be prominently displayed throughout the day
 - Tee sign produced by tournament committee
 - Half page advertisement in tournament program

..... At \$275.00
- **FLAG SPONSOR –**
 - Corporate name on flag produced by tournament committee
 - Quarter page advertisement in tournament program
 - Golf Flag

..... At \$175.00
- **TEE SPONSOR –**
 - Corporate name printed on “Tee Sign” for designated hole
 - Recognition in tournament program

..... At \$100.00
- **RAFFLE PRIZE DONOR –**
 - Business leader or individual supportive of Colonie’s Volunteer fire service
 - Recognition in tournament program
 - Donate item/s valued at \$25 or more

..... At \$25.00
- **FIREFIGHTER SUPPORTER –**
 - Name recognition in tournament program

..... At \$20.00

Office of Emergency
Management
P.O. Box A
58 Verda Ave.
Clarksville, NY
12041

Ph: (518) 720-8025
Fax: (518) 720-8031



Albany County Sheriff's Office Critical Incident Emergency Management Unit

June 2022

TOWN of COLONIE *Firefighters*
ANNUAL GOLF TOURNAMENT
Friday August 19, 2022

Sponsor Response Form

Name: _____ Company: _____

Address: _____

Phone: _____ Fax: _____
Email: _____

Please Indicate Sponsor Level:

- **Platinum Sponsor** _____
- **Gold Corporate Sponsor** _____
- **Corporate Sponsor** _____
- **Luncheon Sponsor** _____
- **Flag Sponsor** _____
- **Tee Sponsor** _____

• ****Raffle Prize Donor:**
Item: _____
Value: _____

• **Firefighter Supporter:**
Name: _____
Value: _____

Enclosed is my check for: _____ (payable to Colonie Firefighters Golf Tournament)

**** Raffle prizes can be picked up by a Tournament Committee Member. (Yes - Pick Up: _____)**

Office of Emergency
Management
P.O. Box A
58 Verda Ave.
Clarksville, NY
12041

Ph: (518) 720-8025
Fax: (518) 720-8031



Albany County Sheriff's Office
Critical Incident Emergency Management Unit

June 2022

Guilderland Center Fire Department



ORCHARD CREEK GOLF CLUB - ALTAMONT, NY



SPONSORSHIP OPPURTUNITIES:

CORPORATE SPONSOR \$1000

- Corporate Sponsor sign at registration
- Corporate Sponsor sign at dinner
- Golf for 4

TEAM SPONSOR \$500

- Team Sponsor recognition at dinner
- Golf for 2

LUNCH SPONSOR \$250

- Prominent sign at registration

GREEN SPONSOR \$200

- Custom 14x20 flag on green

DRIVING RANGE SPONSOR \$175

- Prominent sign at range

TEE SPONSOR \$100

- Sponsor sign at tee box

"CAPTAIN" SPONSOR \$50

- Name Recognition at dinner

\$135 Per Golfer

Registration fee Includes:

18 Holes of Golf with Cart

Lunch, Dinner & Prizes

Reserve by July 8, 2022

PROCEEDS TO BENEFIT



For more information, please contact:

Tom Lawton: trl12203@yahoo.com
or gfdgolf21@gmail.com

Please send donations to:

Guilderland Center Fire Department
PO Box 112 Guilderland Center NY 12085
Attn: Golf Committee

Office of Emergency
Management

P.O. Box A
58 Verda Ave.
Clarksville, NY
12041

Ph: (518) 720-8025
Fax: (518) 720-8031



Albany County Sheriff's Office Critical Incident Emergency Management Unit

June 2022

COSMO STRIGARO ANNUAL SOFTBALL TOURNAMENT

JULY 30-31, 2022
FASNY FIREMEN'S HOME
HUDSON, NY

TO REGISTER FOR GAME AND/OR CAMPING: [HTTPS://FASNY.COM/
EVENTS/COSMO-STRIGANO-ANNUAL-SOFTBALL-TOURNAMENT/](https://fasny.com/events/cosmo-strigano-annual-softball-tournament/)

The Annual Cosmo Strigaro New York State Volunteer Firefighters Softball Tournament will be held Saturday July 30th and Sunday July 31st. The softball games will be played on the immaculate fields at the Firemen's Home in Hudson, NY. Sign up your department or attend this event for some of the best slow pitch softball in the state. Visit the Firemen's Home and the FASNY Museum of Firefighting.



Office of Emergency
Management
P.O. Box A
58 Verda Ave.
Clarksville, NY
12041

Ph: (518) 720-8025
Fax: (518) 720-8031



Albany County Sheriff's Office Critical Incident Emergency Management Unit

June 2022



Columbia Southern University is proud to award two scholarships to members of the National Volunteer Fire Council (NVFC). Each scholarship will cover up to 60 credit hours towards one online degree program. The scholarship will be applied directly to the recipient's tuition for up to three years or until the completion of the selected online degree program, whichever comes first.

Eligibility and Requirements

In order to be eligible for the scholarship, applicants must:

Be a member of the NVFC. If you are not currently an NVFC member, visit the NVFC website to learn about membership benefits and join the NVFC. www.nvfc.org

Be a volunteer responder

Complete the CSU/NVFC Scholarship application

Submit a 500-word essay on this subject: "Explain how the opportunity to continue your education through this scholarship will advance your participation in the fire and emergency services or enhance your ability to contribute back to the emergency services community."

Provide at least one letter of recommendation (from a teacher or someone at the fire department you reported to directly)

Must not have previously earned a scholarship through CSU or the NVFC

Have a high school diploma or equivalent (GED), and be able to provide a transcript

Be able to begin coursework within 90 days of the date of the award

Maintain a 2.0 undergraduate GPA or 3.0 graduate GPA

Remain in good standing with CSU and NVFC throughout his or her degree program

Maintain continuous enrollment in the CSU degree program

Current CSU students must already meet these requirements to be considered

Application Process

The scholarship will be open from May 18, 2022 through August 17, 2022. An NVFC Scholarship Committee will select the winners. Winners will be announced in October. All applicants will receive an email notifying them of the decision.

Questions? Please email our scholarship liaison at scholarships@columbiasouthern.edu or call **888-785-3006**.

Office of Emergency
Management

P.O. Box A
58 Verda Ave.
Clarksville, NY
12041

Ph: (518) 720-8025
Fax: (518) 720-8031



Albany County Sheriff's Office Critical Incident Emergency Management Unit

June 2022



NYS AFC Regional Hands-On Training **Beyond the Basics**



Host: Round Lake Fire Department Saratoga County September 24-25, 2022

Round Lake F.D. • Station #1 • 13 Curry Avenue • Round Lake, NY 12151

This full-day, eight-hour program features seven hands-on training stations covering hoseline advancement, forcible entry, survival skills, ladders, saws, vent enter search (live fire evolution), and thermal imaging camera techniques (live fire evolution). Students will participate in a brief orientation and then complete all stations over the course of the day. This highly interactive program will keep every firefighter engaged and is geared toward firefighters operating in low-manpower situations.

Office of Emergency
Management

P.O. Box A
58 Verda Ave.
Clarksville, NY
12041

Ph: (518) 720-8025
Fax: (518) 720-8031



Albany County Sheriff's Office Critical Incident Emergency Management Unit

June 2022



NYSAFC Regional Hands-On Training **FIRE BEHAVIOR ON THE INSIDE**



**Host: East Glenville Fire District
Schenectady County
November 5-6, 2022**

@ East Glenville Fire District • 433 Saratoga Road • Schenectady, NY 12302

This intense live fire training program allows students to witness changes in fire behavior while common fireground actions are performed. Window ventilation, door control, VES, and more will take place while firefighters monitor conditions from inside the fire building, providing the rare opportunity to witness changes in fire behavior on the inside. Fire dynamics will be discussed throughout the daylong program, providing students with multiple opportunities to gain a more thorough understanding of how their actions may affect fire behavior. This eight-hour training includes a brief classroom orientation, followed by live fire hands-on training evolutions.

- **Live fire VES.**
- **Search in pre-flashover conditions.**
- **Monitor smoke, heat, and air movement from inside the building.**
- **Over 12 live fire evolutions per day.**

Office of Emergency
Management

P.O. Box A
58 Verda Ave.
Clarksville, NY
12041

Ph: (518) 720-8025
Fax: (518) 720-8031



Albany County Sheriff's Office Critical Incident Emergency Management Unit

June 2022

NYSAFC 2022 SEMINAR SERIES

NYSAFC 2022 Seminar Series "The Five Points of Command" **With Chief/Commissioner Michael Lombardo, Buffalo Fire Department** **Three-Hour Seminar:**

The fire ground is a dynamic, ever-changing environment. It can be a daunting challenge for firefighters, company officers, and chief officers to control an emergency situation. A cohesive and smart incident action plan is critical and key to successfully controlling the chaos that we so often respond to. Personnel must understand the components of the incident action plan and how this plan effects all facets of the operation and all who are operating to attain success. Remember, this plan isn't just for and about incident commanders, but rather a framework for all on the fire ground to operate with. Whether you are a new firefighter or the chief of department, having, implementing, and understanding the incident action plan will provide the clarity and coordination for a safe and successful operation.



Instructor Michael Lombardo:

Mike Lombardo is a 43-year veteran of the fire service and was the commissioner/chief of department of the Buffalo Fire Department from 2006-2010. He is a New York state fire instructor and was a member of the development team for the New York State Firefighter Survival and Rapid Intervention programs. Lombardo has also served as a Hands-On Training instructor for NYSAFC. He is a two-time *Firehouse* magazine Heroism Award recipient and is the FDIC 1999 Tom Brennan Training Achievement Award recipient. In 2015, Lombardo was a contributor for the NFFF documentary "[Giving Courage: LODD Chiefs Speak.](#)" He provides consulting services across the United States and serves as an instructor on fire tactics, live fire attack, firefighter survival, command, and fire department operations. Lombardo is also a member of the board of directors of the Fire Department Training Network, where he developed the Fire Command program. He is currently an active member of the East Amherst Fire Department and is a past assistant chief of the Christiana (DE) Fire Department.

Registration Fee:

\$35 per person – NYSAFC Individual and Department Members

\$50 per person – Non-Members

Seating is limited at some sites. Pre-registration is encouraged. On-site registration will be accepted if space permits.

October 24 – 7:00 p.m. – Albany County, Village of Ravena Fire Department • 116 Main Street • Ravena, NY 12143

To Register: https://www.nysfirechiefs.com/files/Events_Training/Seminar%20Series%202022%20Flyer_Form%204.jpg

Office of Emergency
Management

P.O. Box A
58 Verda Ave.
Clarksville, NY
12041

Ph: (518) 720-8025
Fax: (518) 720-8031



Albany County Sheriff's Office Critical Incident Emergency Management Unit

June 2022

Albany County Training

ALBANY COUNTY FIRE TRAINING SCHEDULE #4 2022 is now available on our website .

<https://www.albanycounty.com/home/showpublisheddocument/21504/637901024302632499>

Truck Company Operations

There is a Truck Company Operations on our training schedule starting September 14th in Colonie. Do you like to break stuff? Do you want to know how to quickly get in that front door when the Incident Commander tells you to “take it”? Want to be more confident when you’re told to “vent the roof”? **THIS IS THE CLASS FOR YOU!**

For years, we have been struggling with the public perception that our “Truck Company Ops” course is only for departments that run a piece of aerial apparatus. Help us to spread the word that this is not the case! Chiefs: please talk to your firefighters about the importance of this class!

Firefighting requires a lot of training and constant learning. Courses like Basic Exterior Firefighting Operations (BEFO) and Interior Firefighting Operations (IFO) are meant to teach the basics to new firefighters. Those classes are just the building blocks. There are many more courses offered through the Office of Fire Prevention and Control.

Every fire requires us to do two things: put water on the fire (Engine Company Operations), and ventilation and forcible entry (Truck Company Operations). The Truck Company Operations course is a class that all interior firefighters should take. This course provides instruction for using equipment usually assigned to a Truck Company: operating ground ladders, forcible entry, operating and maintaining specialized tools, ventilation, building construction, and search and rescue.

Note that there is no requirement to actually own a “Truck” to take this course! Smaller departments that only run engines still need to be experts in all of these skills! Truck Company Operations is a great way to help to develop and perfect those skills.

Article Submissions Requested

Do you have an idea for an article for our newsletter?

Do you have a talent for writing?

Is there an area that you have a strong knowledge or interest in?

If so, please contact us. We are always looking for valuable information to pass on to the Emergency Services Community. If you seen an interesting article, let us know.

Please contact:

Chief Paul Miller

Albany County Fire Coordinator's Office

paul.miller@albanycountyny.gov

(518) 720-8034

Office of Emergency
Management

P.O. Box A
58 Verda Ave.
Clarksville, NY
12041

Ph: (518) 720-8025
Fax: (518) 720-8031

ALBANY COUNTY FIRE TRAINING SCHEDULE #4 2022

Pre-Registration Required: Students may register by clicking on the Learning Management System link on the NYS OPFC Home Page ([NYS Division of Homeland Security & Emergency Services - OPFC](#))



Registration opens 45 days before the first class

COURSE	LOCATION	DATE	INSTRUCTOR	PREREQUISITES
--------	----------	------	------------	---------------

Please Note that a training authorization letter is now required for all courses offered by the New York State Office of Fire Prevention and Control

NFA – Incident Safety Officer Revised Dates	Elsmere	June 6, 8, 13, 15, 20, 22 1830-2130	Clawson	None
Rescue Technician Basic	Colonie MTB	May 24, 31, June 2, 7, 9, 11 Weeknights 1830 Saturday 0800-1700	DeGross	None
Firefighter II	Guilderland Tower	June 8, July 20, August 24, September 7, 14, 21, 28, October 5, 12, 19, 26, November 2 Weeknights 1830	DeGross	Firefighter I or Equivalent
Firefighter II Boot Camp	Guilderland Tower	June 14, July 25, 26, 27, 28, 30, August 8, 9, 10, 11, 13 Weeknights 1830 Saturday 0800	DeGross	Firefighter I or Equivalent
Apparatus Operator - Aerial Device	Colonie MTB	June 16, 23, 28, 30, July 12, 28, 30, Weeknights 1830	Molesky	Scene Support Operations/Basic Exterior Firefighter Operations or Equivalent

		Saturday 0900-1500		
INTERMEDIATE ICS FOR EXPANDING INCIDENTS (I-300) NEW TO SCHEDULE	Watervliet Arsenal	June 28, 29, 30 0800-1700	Richard French	ICS 200
Firefighter Survival: Self Rescue NEW TO SCHEDULE	Guilderland Tower	July 9 & 23 0833-1430	Kerr	Firefighter I
Apparatus Operator-Pump Boot Camp	Colonie MTB	June 29, July 9, 10, 11 Weeknight 1830 Weekend 0800-1700	DeGroff	Scene Support Operations/Basic Exterior Firefighter Operations or Equivalent
Apparatus Operator - Emergency Vehicle Operator	Slingerlands	September 6, 8, 13, 15, 17 Weeknights 1830 Saturday 0800	DeGroff	Driver's License
Truck Company Operations	Colonie MTB	September 14, 21, 26, 28, October 3, 10, 15 Weeknights 1830-2130 Saturday 0900-1500	Molesky	Firefighter I or Equivalent and SCBA Qualified
Fire Instructor II	Watervliet Arsenal	September 30, October 1, 2, 8, 9 0800-1700	OFPC	Fire Service Instructor I There is a lengthy pre-course reading assignment, and students complete a pre-test, final exam, independent assignments, and one presentation during the course. Course includes homework and independent study. There is a dress code for candidates attending this course.

Apparatus Operator-Pump	Slingerlands	October 11, 13, 18,20, 22, 25 Weeknights 1830 Saturday 0800	DeGroff	Scene Support Operations/Basic Exterior Firefighter Operations or Equivalent
Principals of Instruction	Elsmere	November 7, 14, 21, 28, December 5	Clawson	None
Vehicle Rescue: Operations Level	Onesquethaw	November 7, 9, 14, 16, 21	DeGroff	None
Fire Instructor II	Watervliet Arsenal	November 28, 29, 30, December 1, 2	Bachner	Fire Instructor I There is a lengthy pre-course reading assignment, and students complete a pre-test, final exam, independent assignments, and one presentation during the course. Course includes homework and independent study. There is a dress code for candidates attending this course.
<p>Unless changed by instructor or noted above: All evening classes will be held from 19:00-22:00 hours.</p> <p>All Saturday and Sunday classes will be held from 09:00-12:00 hours and 13:00-16:00 hours</p>			<div style="display: flex; justify-content: space-around; align-items: center;">  <div style="text-align: center;"> <p>Fire Coordinator Gerald Paris</p> </div>  </div>	