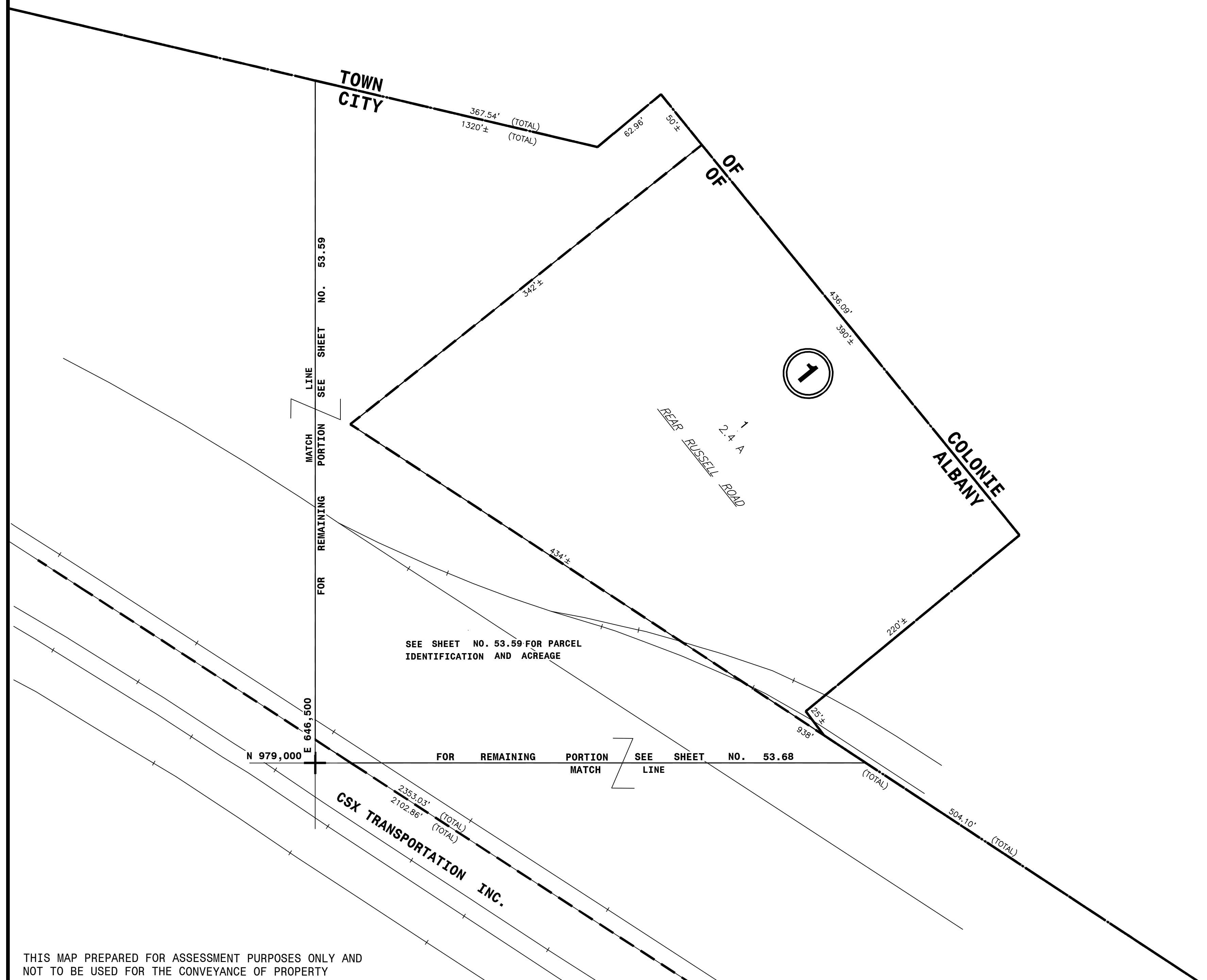


N 980,000
E 646,800

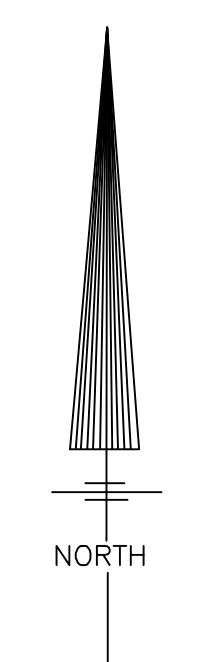
N 980,000
E 646,000



SEE SHEET NO. 53.59 FOR PARCEL IDENTIFICATION AND ACREAGE

FOR REMAINING PORTION MATCH LINE SEE SHEET NO. 53.68

E 646,000
N 979,000



THIS MAP PREPARED FOR ASSESSMENT PURPOSES ONLY AND NOT TO BE USED FOR THE CONVEYANCE OF PROPERTY

NYS PLANE COORDINATE SYSTEM NAD83
© Copyright 2024
County of Albany, NY, USA

AUTHORIZED BY:
ORDINANCE OF THE COMMON COUNCIL
PASSED AUGUST 21, 1972

PREPARED BY:
SMITH & MAHONEY, CONSULTING ENGINEERS
ALBANY, NEW YORK

DIGITAL CONVERSION BY:
THE SANBORN MAP COMPANY INC.
PELHAM, NEW YORK

REVISION TABLE			
DATE	MADE BY	CHANGES	OR ADDITIONS

REVISION TABLE			
DATE	MADE BY	CHANGES	OR ADDITIONS

REVISION TABLE			
DATE	MADE BY	CHANGES	OR ADDITIONS

LEGEND	
PROPERTY LINE	———
ORIGINAL LOT LINE	- - - - -
RAIL ROAD	———
STREAM OR DITCH	~~~~~
ROAD OR RAIL ROAD BNDY.	———
STREET CENTERLINE	———
COUNTY LINE	———
CITY LINE	———
VILLAGE LINE	———
TOWN LINE	———
BLOCK LIMIT	———
GREAT LOT LINE	———
EASEMENT LINE	———
WATER DISTRICT LINE	———
TAX DISTRICT LINE	———
FIRE DISTRICT LINE	———
DENOTES COMMON OWNER	———
TAX MAP BLOCK NO.	②
TAX MAP PARCEL NO.	76.00-1-11
STREET NUMBER	28
FILED PLAN LOT NO.	27
GREAT LOT NO.	②
CALCULATED ACREAGE	7.5 A (C)
DEED ACREAGE	17.5 A
SCALED DIMENSION	225'(S)
DEED DIMENSION	173.2'
VISUAL CENTER OF PARCEL	②

SHEET INDEX	
53.59	53.68
53.67	53.68

TAX MAP 53.60

CITY OF ALBANY
ALBANY COUNTY, NEW YORK

SCALE: 1"=50'

TAXABLE STATUS DATE: 3/1/24

TAX MAP UPDATED THROUGH MARCH 1, 2024