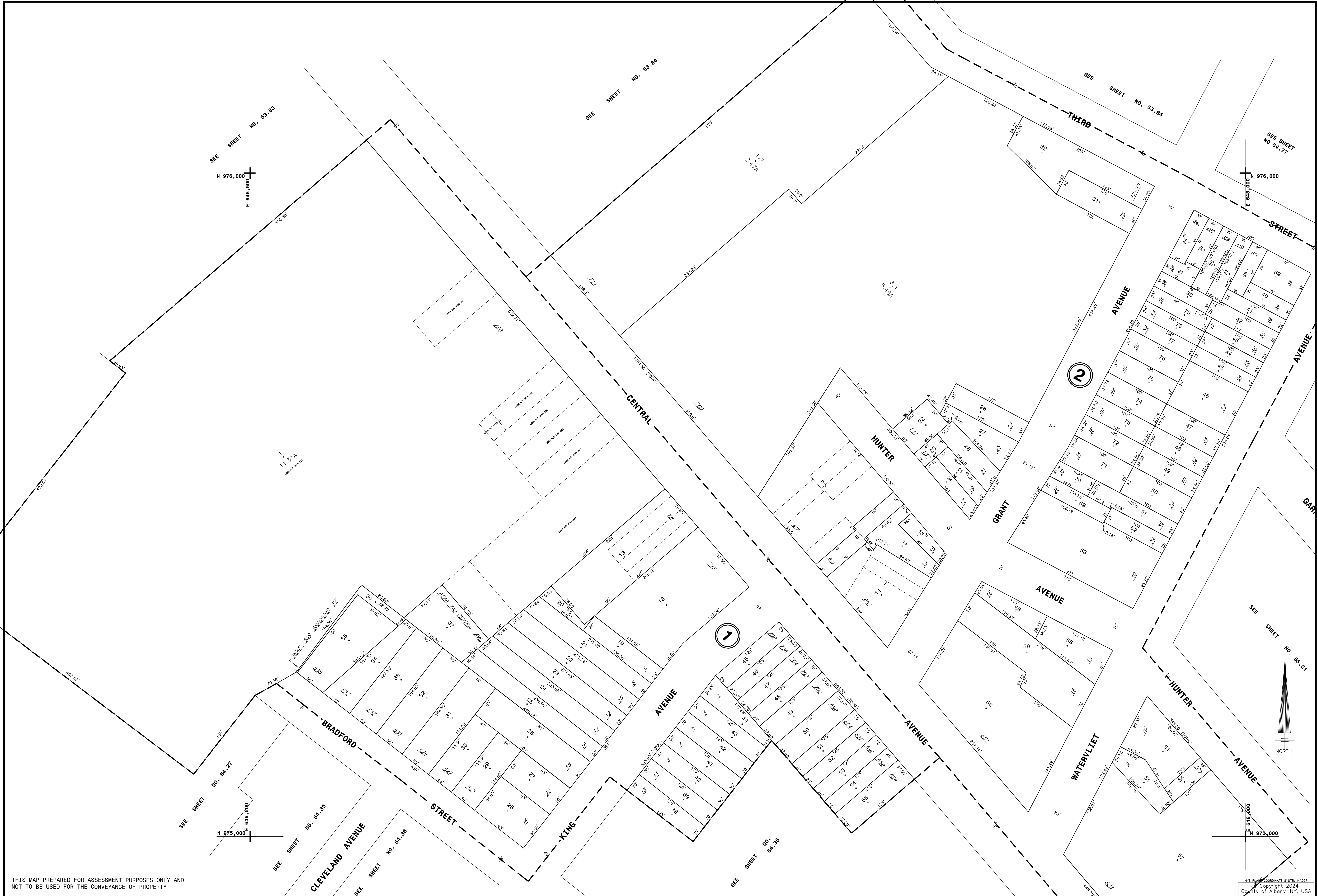


NYS IMAGERY 6811400, 6841400



THIS MAP PREPARED FOR ASSESSMENT PURPOSES ONLY AND NOT TO BE USED FOR THE CONVEYANCE OF PROPERTY

AUTHORIZED BY:  
ORDINANCE OF THE COMMON COUNCIL  
PASSED AUGUST 21, 1972

PREPARED BY:  
SMITH & MAHONEY, CONSULTING ENGINEERS  
ALBANY, NEW YORK

DIGITAL CONVERSION BY:  
THE SANBORN MAP COMPANY INC.  
PELHAM, NEW YORK

REVISION TABLE		
DATE	MADE BY	CHANGES OR ADDITIONS
APRIL 18, 1979	J.K.D.	CONSOLIDATED 2-6 WITH 2-18
6-10-81	Tgr	CONSOLIDATED 1-31-41-51-6 WITH 1-1 PER 2187-523
6-19-85	MM	REVISED PARCELS 2-17 & 6 PER CITY MAP 1486
8-25-91	LML	REV. 2-62 PER CM # 1817 DEL. 2-81, 83, 86
3-31-95	JV	REVISED 1-12 NUDGE W/ 1-13 PER CITY MAP #2011
6-4-97	JW	DEL. 2-672-60 MERGED IN TO 2-59 PER MAP 2093

REVISION TABLE		
DATE	MADE BY	CHANGES OR ADDITIONS
4-99	JW	REV 2-57 PER CITY MAP 2159
11-8-03	JW	CHANGED MAPS BY NUMBERS PER CITY REPORT OF 3/23/2003
6-2-10	JW	MERGED 2-16 WITH 2-15 TO CORRECT ASSIGNMENT ERROR
9-2-10	JW	BUILT 2-20, 21, 22, 23, 24, 25, 26, 27, 28, 29, 30, 31 PER CITY MAP 206
1/19/13	JW	MERGED 2-16 & 30 WITH 2-15 PER CITY MAP 2103
8/14/13	JW	MERGED 2-16, 18 & 19 WITH 1-13 PER CITY MAP 2103
4/13/14	JW	MERGED 2-8, 10, 12 & 13 WITH 2-11 PER CITY MAP 2103
2/15/17	JW	MERGED 1-14, 15 & 16 WITH 1-13 PER CITY MAP 2103 (2002-145, 1145, 1151 & 82016-1627)

REVISION TABLE		
DATE	MADE BY	CHANGES OR ADDITIONS
9/11/2023	JW	MERGED 1-12, 11 WITH 1-1 TO AGREE WITH ASSESSMENT

LEGEND		
PROPERTY LINE	---	CITY LINE
VILLAGE LOT LINE	---	VILLAGE LINE
RAIL ROAD	---	TOWN LINE
ROAD OR DITCH	---	BLOCK LIMIT
ROAD OR RAIL ROAD BNDY.	---	GREAT LOT LINE
STREET CENTERLINE	---	EASEMENT LINE
COUNTY LINE	---	WATER DISTRICT LINE
		FIRE DISTRICT LINE
		DENOTES COMMON OWNER
		TAX MAP BLOCK NO.
		TAX MAP PARCEL NO.
		STREET NUMBER
		FILED PLAN LOT NO.
		GREAT LOT NO.
		CALCULATED ACREAGE
		DEED ACREAGE
		SCALED DIMENSION
		DEED DIMENSION
		VISUAL CENTER OF PARCEL

SHEET INDEX	
53.83	53.84
64.27	64.28
64.36	65.29

TAX MAP 64.28

**CITY OF ALBANY**  
ALBANY COUNTY, NEW YORK

SCALE: 1"=50'

TAXABLE STATUS DATE: 3/1/24

THROUGH MARCH 1, 2024