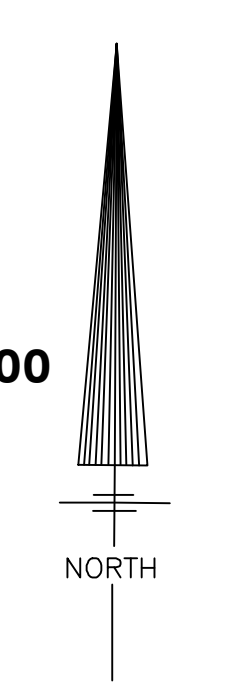
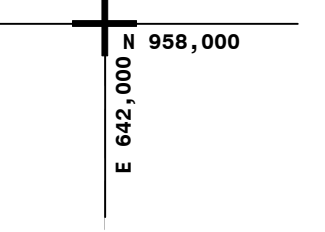
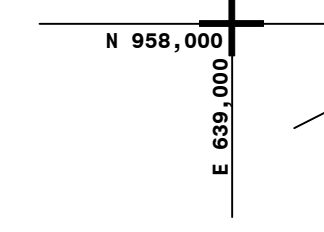
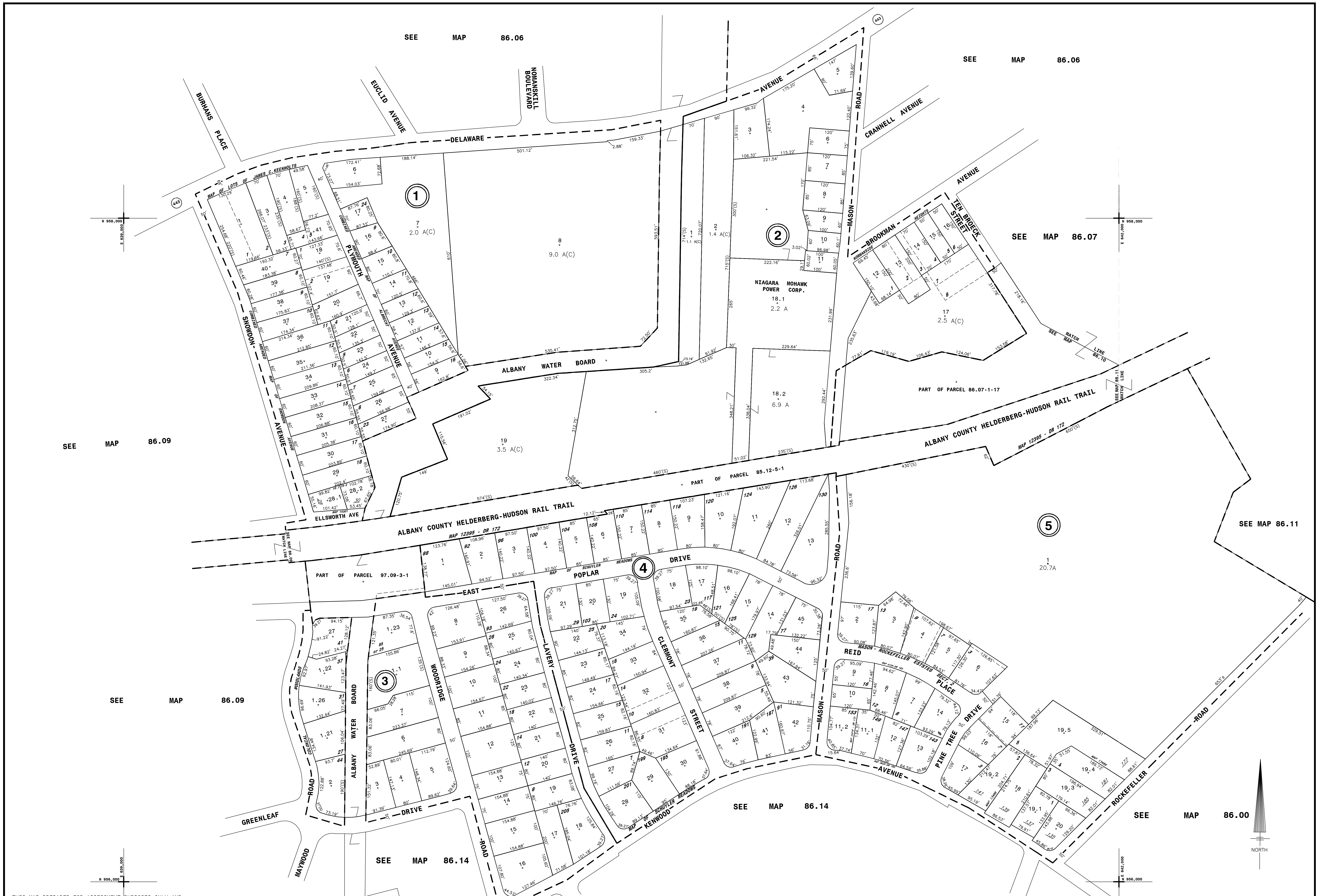


NYS IMAGERY 6751380, 6611346



THIS MAP PREPARED FOR ASSESSMENT PURPOSES ONLY AND NOT TO BE USED FOR THE CONVEYANCE OF PROPERTY

PREPARED BY SMITH & MAHONEY, ENGINEERS & SURVEYORS ALBANY, NEW YORK REAL PROPERTY TAX SERVICE AGENCY ALBANY COUNTY, NEW YORK

DIGITAL CONVERSION BY: THE SANBORN MAP COMPANY INC. PELHAM, NEW YORK

REVISION TABLE with columns for DATE, BY, CHANGES OR ADDITIONS, and a detailed list of revisions.

SPECIAL DISTRICTS table with columns for TYPE, SYMBOL, DISTRICT NAME, and descriptions for various districts like Fire, Water, and Sewer.

LEGEND table with columns for DISTRICT LINE, COMMON OWNER, and various symbols used on the map.

TAX MAP BLOCK NO. 74.12-1-10 with columns for TAX MAP PARCEL NO., STREET NUMBER, and FILED PLAN LOT NO.

GREAT LOT NO. table with columns for CALCULATED ACRES, DEED ACRES, and DEED DIMENSION.

TOWN OF BETHELEM ALBANY COUNTY, NEW YORK. Includes a scale bar (0 to 200 feet), a sheet index grid, and the date 'TAX MAP UPDATED THROUGH MARCH 1, 2024'.