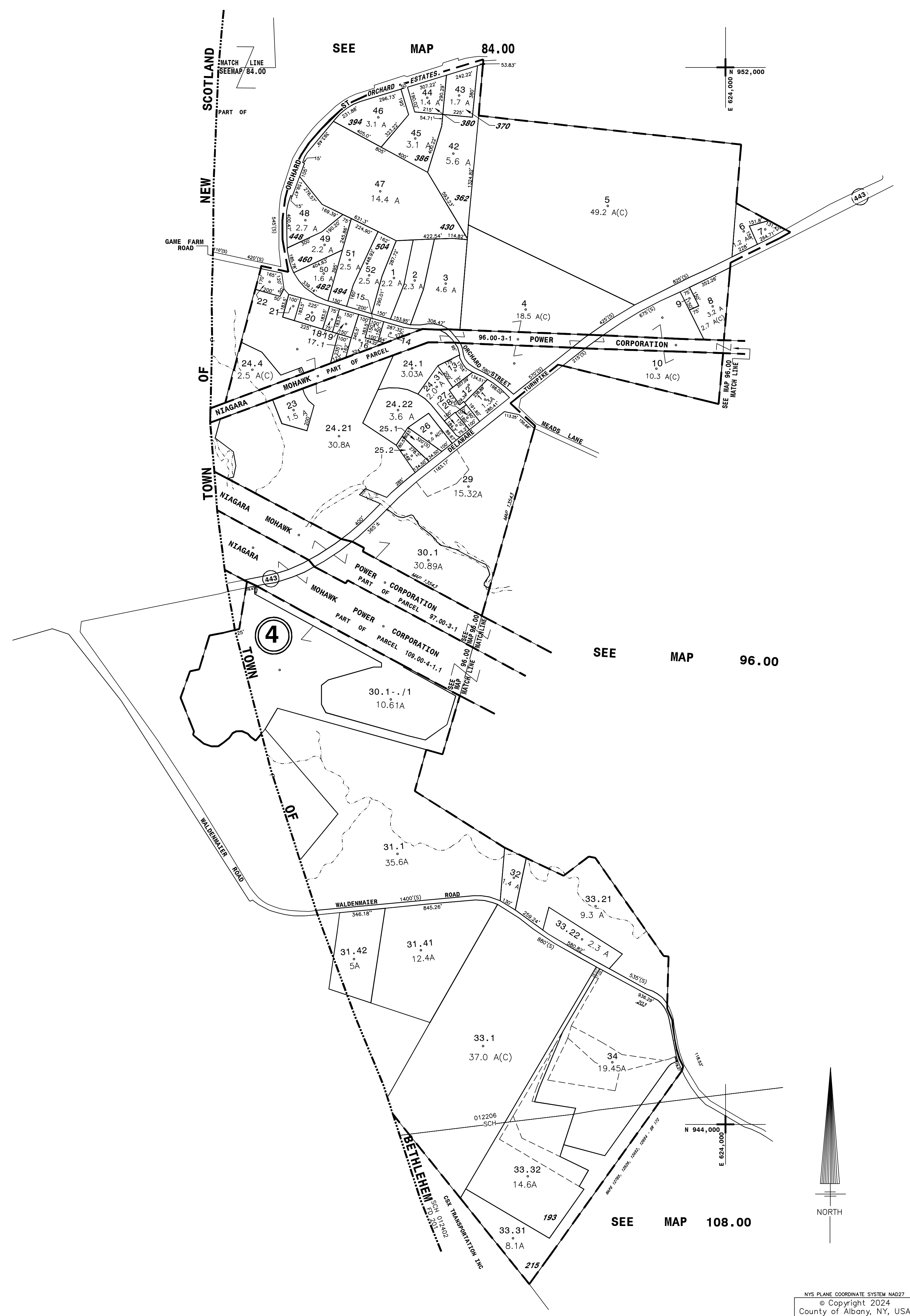
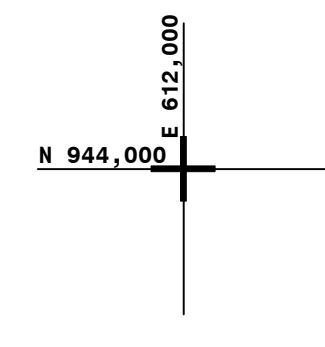
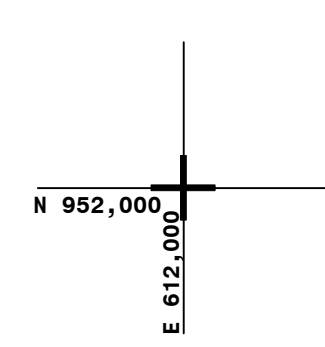


NYS IMAGERY 6571370



DATE	BY	CHANGES OR ADDITIONS	DATE	BY	CHANGES OR ADDITIONS
3-11-14	JRO	DECLINED 4-33.34 MERGED WITH 4-33.32 PER LEASE 3066-759	6/30/14	JRO	MERGED BETHLEHEM 95.00-4-35 WITH NEW SCOTLAND 95.00-3-97 TO AGREE WITH NEW SCOTLAND ASSESSMENT ROLL
6/25/14	JRO	MOVED BETHLEHEM 95-4-35.1 A TO 2 TO TOWN OF NEW SCOTLAND PER 2014 MERGED AND CREATED 3-41.11 A	6/30/14	JRO	MERGED BETHLEHEM 95.00-4-35 WITH NEW SCOTLAND 95.00-3-96 TO AGREE WITH NEW SCOTLAND ASSESSMENT ROLL
			6/30/14	JRO	MERGED BETHLEHEM 95.00-4-35 WITH NEW SCOTLAND 95.00-3-96 TO AGREE WITH NEW SCOTLAND ASSESSMENT ROLL
6/30/14	JRO	MERGED BETHLEHEM 95.00-4-35 WITH NEW SCOTLAND 95.00-3-80 TO AGREE WITH TOWN OF NEW SCOTLAND ASSESSMENT ROLL	2/5/15	JRO	MERGED 4-24.32 WITH 4-24.1 TO AGREE WITH TOWN OF BETHLEHEM ASSESSMENT ROLL
6/30/14	JRO	MERGED BETHLEHEM 95.00-4-41 WITH NEW SCOTLAND 95.00-3-92 TO AGREE WITH NEW SCOTLAND ASSESSMENT ROLL	2/11/19	JRO	MERGED 4-30.22 MERGED WITH 4-26; RENUMBERED 4-30 TO 35.1 PER MAP 1244 A 2019-2020
6/30/14	JRO	MERGED BETHLEHEM 95.00-4-41 WITH NEW SCOTLAND 95.00-3-92 TO AGREE WITH NEW SCOTLAND ASSESSMENT ROLL	3/26/2020	JRO	CREATED 4-30.1-1; REVERSED 4-30.1 PER LEASE 92019-1144
6/30/14	JRO	MERGED BETHLEHEM 95.00-4-41 WITH NEW SCOTLAND 95.00-3-92 TO AGREE WITH NEW SCOTLAND ASSESSMENT ROLL			
6/30/14	JRO	MERGED BETHLEHEM 95.00-4-41 WITH NEW SCOTLAND 95.00-3-92 TO AGREE WITH NEW SCOTLAND ASSESSMENT ROLL			
6/30/14	JRO	MERGED BETHLEHEM 95.00-4-41 WITH NEW SCOTLAND 95.00-3-92 TO AGREE WITH NEW SCOTLAND ASSESSMENT ROLL			
6/30/14	JRO	MERGED BETHLEHEM 95.00-4-41 WITH NEW SCOTLAND 95.00-3-92 TO AGREE WITH NEW SCOTLAND ASSESSMENT ROLL			

THIS MAP PREPARED FOR ASSESSMENT PURPOSES ONLY AND NOT TO BE USED FOR THE CONVEYANCE OF PROPERTY

PREPARED BY
SMITH & MAHONEY, ENGINEERS & SURVEYORS
ALBANY, NEW YORK
PREPARED FOR
REAL PROPERTY TAX SERVICE AGENCY
ALBANY COUNTY, NEW YORK

DIGITAL CONVERSION BY:
THE SANBORN MAP COMPANY INC.
PELHAM, NEW YORK

DATE	BY	CHANGES OR ADDITIONS	DATE	BY	CHANGES OR ADDITIONS
3-31-83	DB	ADDED PARCELS 4-24.24-24.3 & 4-24.4 AS PER 2180-2177, 2188-2178 & 2181-2172	11-4-97	DBL	ADDED 4-42, 4-52 PER 10481, 7-172
8-1-83	DB	ADDED PARCELS 4-25.2 PER 2241-39	4-18-00	JAV	REV 4-33.1 & 34 PER 9774-748 & 9774-963
10-2-80	WBN	ADDED PARCELS 4-12 PER 2288-331	1-27-00	JRO	REV 4-21.2, 4-21.3, 4-21.4, 4-21.5, 4-21.6, 4-21.7, 4-21.8, 4-21.9, 4-21.10, 4-21.11, 4-21.12, 4-21.13, 4-21.14, 4-21.15, 4-21.16, 4-21.17, 4-21.18, 4-21.19, 4-21.20, 4-21.21, 4-21.22, 4-21.23, 4-21.24, 4-21.25, 4-21.26, 4-21.27, 4-21.28, 4-21.29, 4-21.30, 4-21.31, 4-21.32, 4-21.33, 4-21.34, 4-21.35, 4-21.36, 4-21.37, 4-21.38, 4-21.39, 4-21.40, 4-21.41, 4-21.42, 4-21.43, 4-21.44, 4-21.45, 4-21.46, 4-21.47, 4-21.48, 4-21.49, 4-21.50, 4-21.51, 4-21.52, 4-21.53, 4-21.54, 4-21.55, 4-21.56, 4-21.57, 4-21.58, 4-21.59, 4-21.60, 4-21.61, 4-21.62, 4-21.63, 4-21.64, 4-21.65, 4-21.66, 4-21.67, 4-21.68, 4-21.69, 4-21.70, 4-21.71, 4-21.72, 4-21.73, 4-21.74, 4-21.75, 4-21.76, 4-21.77, 4-21.78, 4-21.79, 4-21.80, 4-21.81, 4-21.82, 4-21.83, 4-21.84, 4-21.85, 4-21.86, 4-21.87, 4-21.88, 4-21.89, 4-21.90, 4-21.91, 4-21.92, 4-21.93, 4-21.94, 4-21.95, 4-21.96, 4-21.97, 4-21.98, 4-21.99, 4-21.100
2-1-83	LM	ADDED 4-31.1 PER 2288-331	4-8-11	JRO	REVISED 4-24.31 PER LEASE 2000-71
11-28-81	LML	ADDED 4-31.40 PER 2487-2512 REV. 4-31.10	3-28-12	JRO	REVISED 4-30.1 PER LEASE 92019-1144
1-27-97	UC	REV 4-33.1 PER 2522-2523 & 3322	2-28-15	JRO	REVISED 4-30.1 PER LEASE 92019-1144
	DP	PER 2522-2523 & 3322	4-14-13	JRO	CREATED 4-33.1A PER MAP 1244 A 2019-2020

SPECIAL DISTRICTS		DISTRICT NAME		DISTRICT NAME	
TYPE	SYMBOL	DISTRICT NAME	TYPE	SYMBOL	DISTRICT NAME
Fire	FD 201	Denmor Fire District	Water	W	
School	SCH	Bethlehem Central 012206			
		Roveno-Coymans Central 012402			

LEGEND	
PROPERTY LINE	---
ORIGINAL LOT LINE	---
RAIL ROAD	---
STREAM OR DITCH	---
ROAD OR RAIL ROAD BNDY.	---
STREET CENTERLINE	---
COUNTY LINE	---
CITY LINE	---
VILLAGE LINE	---
TOWN LINE	---
BLOCK LIMIT	---
GREAT LOT LINE	---
EASEMENT LINE	---
DISTRICT LINE	---
TAX DISTRICT LINE	---
FIRE DISTRICT LINE	---
DENOTES COMMON OWNER	---
TAX MAP BLOCK NO.	---
TAX MAP PARCEL NO.	---
STREET NUMBER	---
FILED PLAN LOT NO.	---

GREAT LOT NO.	
84.00	85.00
96.00	97.00
107.00	108.00

TAX MAP
TOWN OF BETHLEHEM
ALBANY COUNTY, NEW YORK

95.00

© Copyright 2024
County of Albany, NY, USA

SCALE 1" = 400'

TAXABLE STATUS DATE: 3/1/24

TAX MAP UPDATED THROUGH MARCH 1, 2024