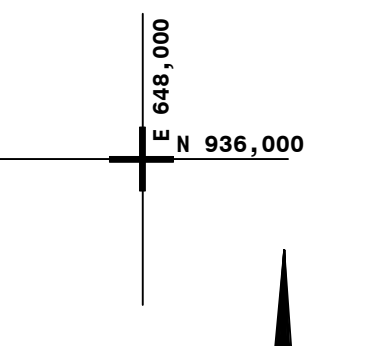
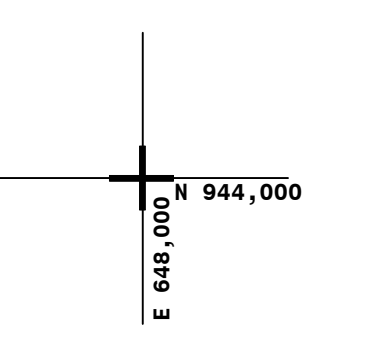
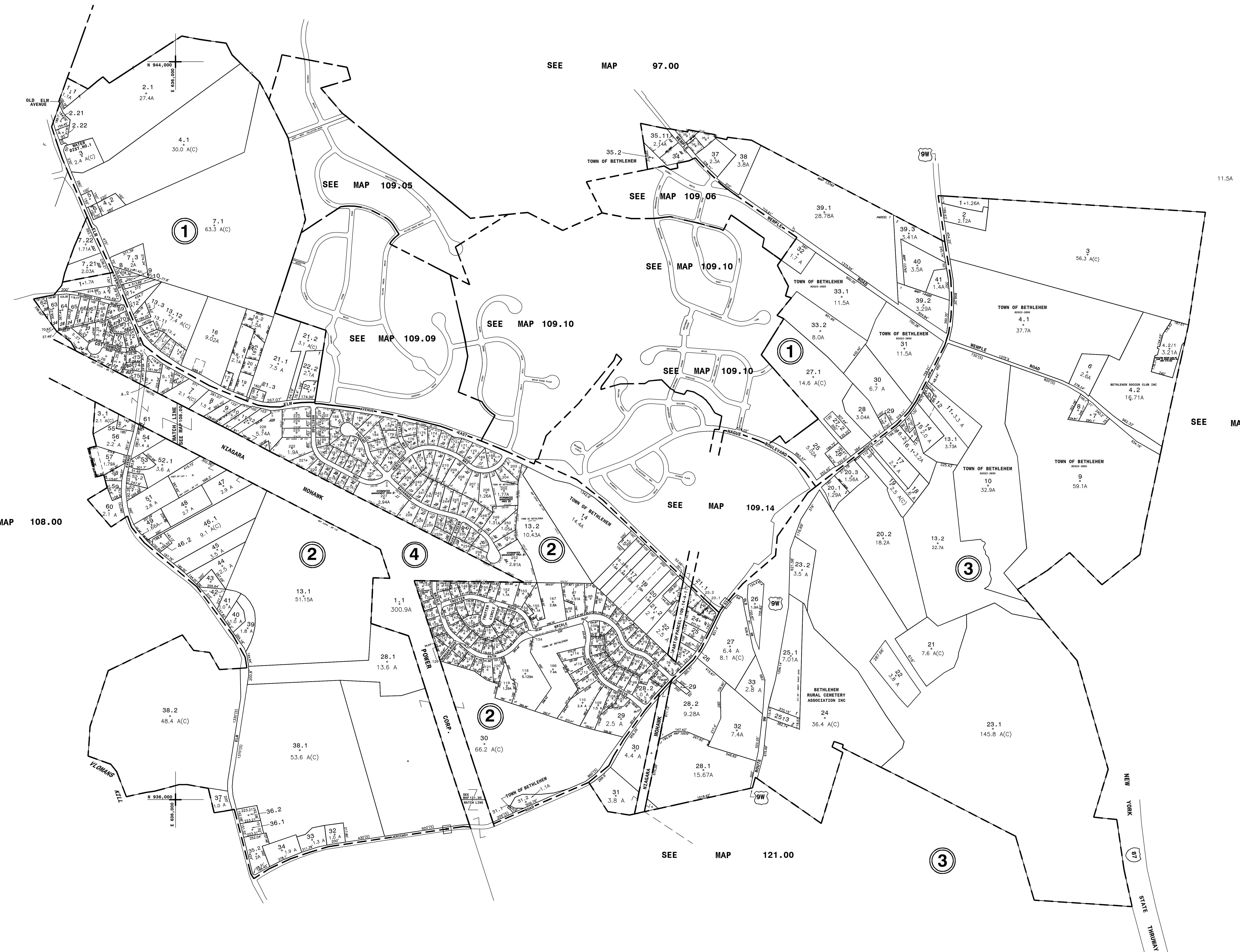


NYS IMAGERY 6791360, 6791362, 6811364



THIS MAP PREPARED FOR ASSESSMENT PURPOSES ONLY AND NOT TO BE USED FOR THE CONVEYANCE OF PROPERTY

PREPARED BY SMITH & MAHONEY, ENGINEERS & SURVEYORS ALBANY, NEW YORK REAL PROPERTY TAX SERVICE AGENCY ALBANY COUNTY, NEW YORK

DIGITAL CONVERSION BY: THE SANBORN MAP COMPANY INC. PELHAM, NEW YORK

Table with columns: DATE, BY, CHANGES OR ADDITIONS, DATE, BY, CHANGES OR ADDITIONS. Includes revision details for various parcels.

Table with columns: TYPE, SYMBOL, DISTRICT NAME, TYPE, SYMBOL, DISTRICT NAME. Lists special districts like Fire, Water, and School.

Table with columns: PROPERTY LINE, ORIGINAL LOT LINE, RAIL ROAD, BLOCK LIMIT, STREAM OR DITCH, ROAD OR RAIL ROAD ENDV., STREET CENTERLINE, COUNTY LINE. Includes legend symbols for various lines.

Table with columns: TAX DISTRICT LINE, FIRE DISTRICT LINE, DENOTES COMMON OWNER, TAX MAP BLOCK NO., TAX MAP PARCEL NO., STREET NUMBER, FILED PLAN LOT NO. Includes legend symbols for tax-related lines.

Town of Bethlehem Albany County, New York. Includes acreage table (96.00, 97.00, 98.00, 108.00, 110.00, 120.00, 121.00, 122.00), scale (1"=400'), and tax map number (74.12-1-10).