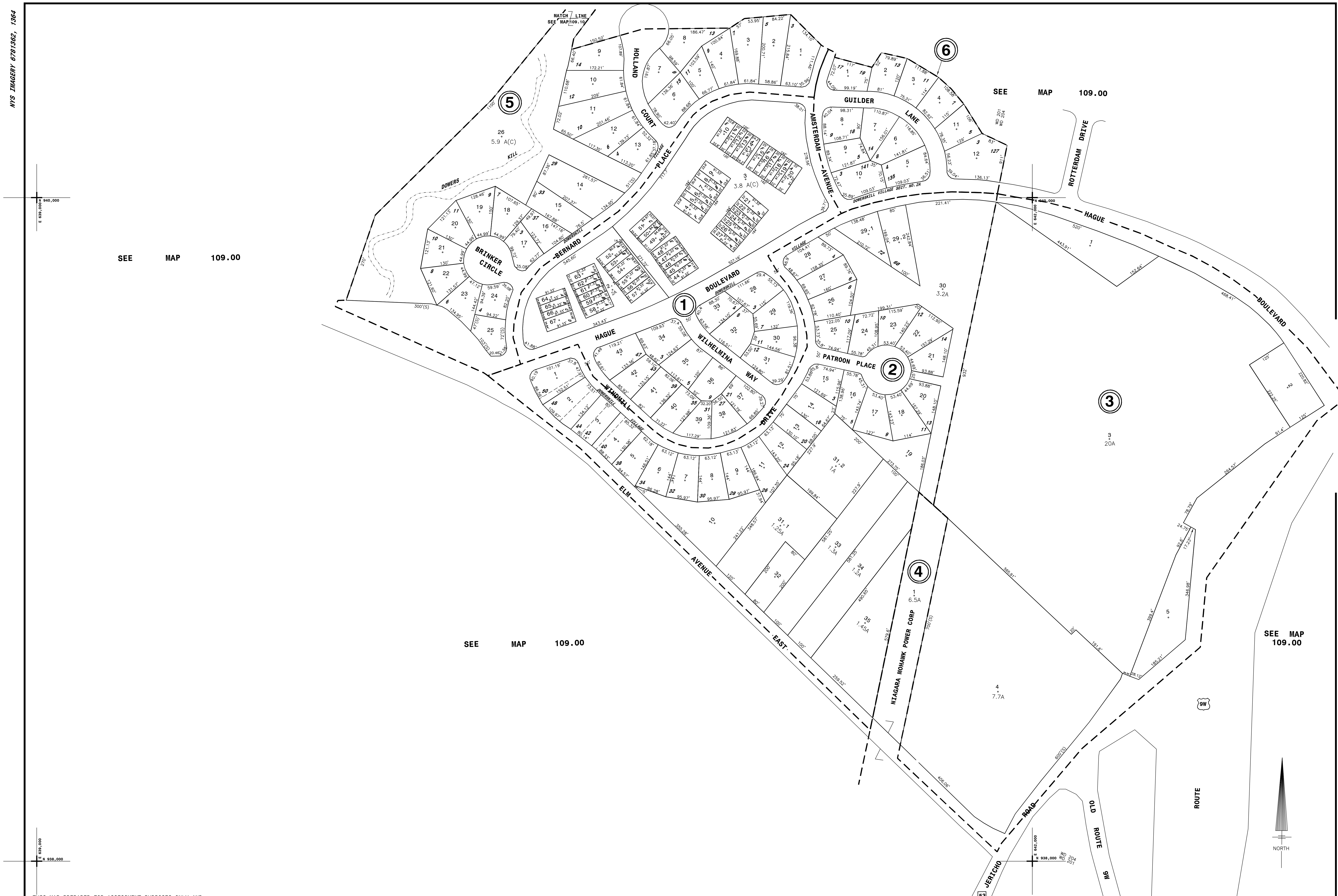


NYS IMAGERY 6/7/13/62, 1364



THIS MAP PREPARED FOR ASSESSMENT PURPOSES ONLY AND NOT TO BE USED FOR THE CONVEYANCE OF PROPERTY

PREPARED BY SMITH & MAHONEY, ENGINEERS & SURVEYORS ALBANY, NEW YORK REAL PROPERTY TAX SERVICE AGENCY ALBANY COUNTY, NEW YORK

DIGITAL CONVERSION BY: THE SANBORN MAP COMPANY INC. PELHAM, NEW YORK

REVISION TABLE with columns for DATE, BY, CHANGES OR ADDITIONS, and a detailed list of revisions from 3-1-82 to 6-28-86.

SPECIAL DISTRICTS table with columns for TYPE, SYMBOL, DISTRICT NAME, and DISTRICT NUMBER, listing various utility and fire districts.

LEGEND table defining symbols for various features like CITY LINE, VILLAGE LINE, TOWN LINE, BLOCK LIMIT, GREAT LOT LINE, EASEMENT LINE, WATER DISTRICT LINE, TAX DISTRICT LINE, FIRE DISTRICT LINE, DENOTES COMMON OWNER, TAX MAP BLOCK NO., TAX MAP PARCEL NO., STREET NUMBER, and FILED PLAN LOT NO.

GREAT LOT NO. table with columns for CALCULATED ACRES, DEED ACRES, SCALED DIMENSION, DEED DIMENSION, and VISUAL CENTER OF PARCEL.

TAX MAP TOWN OF BETHELM ALBANY COUNTY, NEW YORK 109.14. Includes a north arrow, scale bar, and 'TAX MAP UPDATED THROUGH MARCH 1, 2024'.