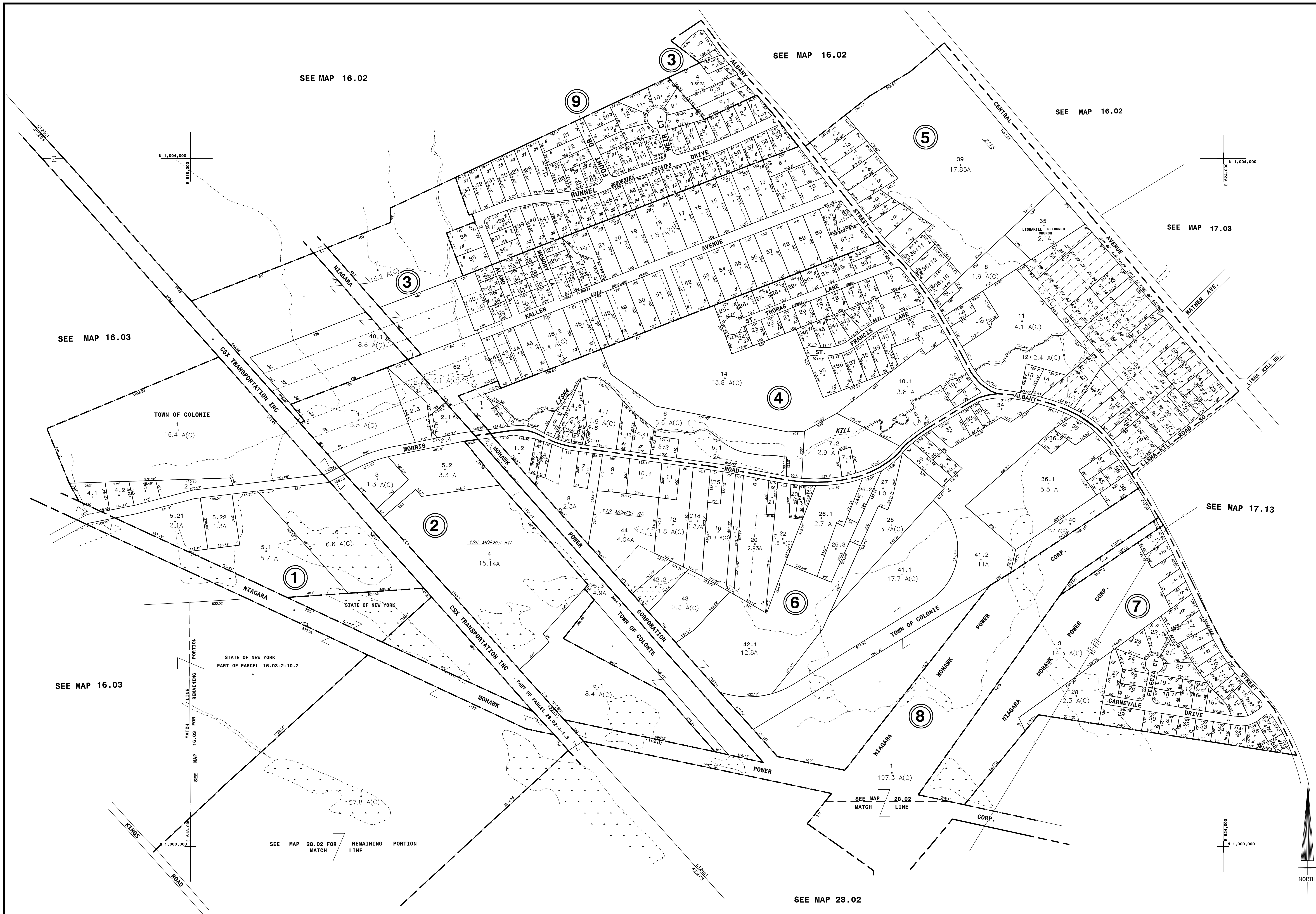


NYS IMAGERY 6541426, 6571426, 6571428



THIS MAP PREPARED FOR ASSESSMENT PURPOSES ONLY AND NOT TO BE USED FOR THE CONVEYANCE OF PROPERTY

PREPARED BY SMITH & MAHONEY, ENGINEERS & SURVEYORS ALBANY, NEW YORK REAL PROPERTY TAX SERVICE AGENCY ALBANY COUNTY, NEW YORK

DIGITAL CONVERSION BY: THE SANBORN MAP COMPANY INC. PELHAM, NEW YORK

REVISION TABLE with columns for DATE, BY, CHANGES OR ADDITIONS, and a detailed list of map updates.

SPECIAL DISTRICTS table listing various districts like Fire, Sewer, and Water with their respective symbols.

LEGEND table defining symbols for property lines, streets, easements, and other map features.

TAX MAP BLOCK NO. 74.12-1-10 with a grid of lot numbers and acreages.

TAX MAP TOWN OF COLONIE ALBANY COUNTY, NEW YORK. Includes title, sheet index, scale, and date information.

16.04 TAXABLE STATUS DATE: 3/1/24