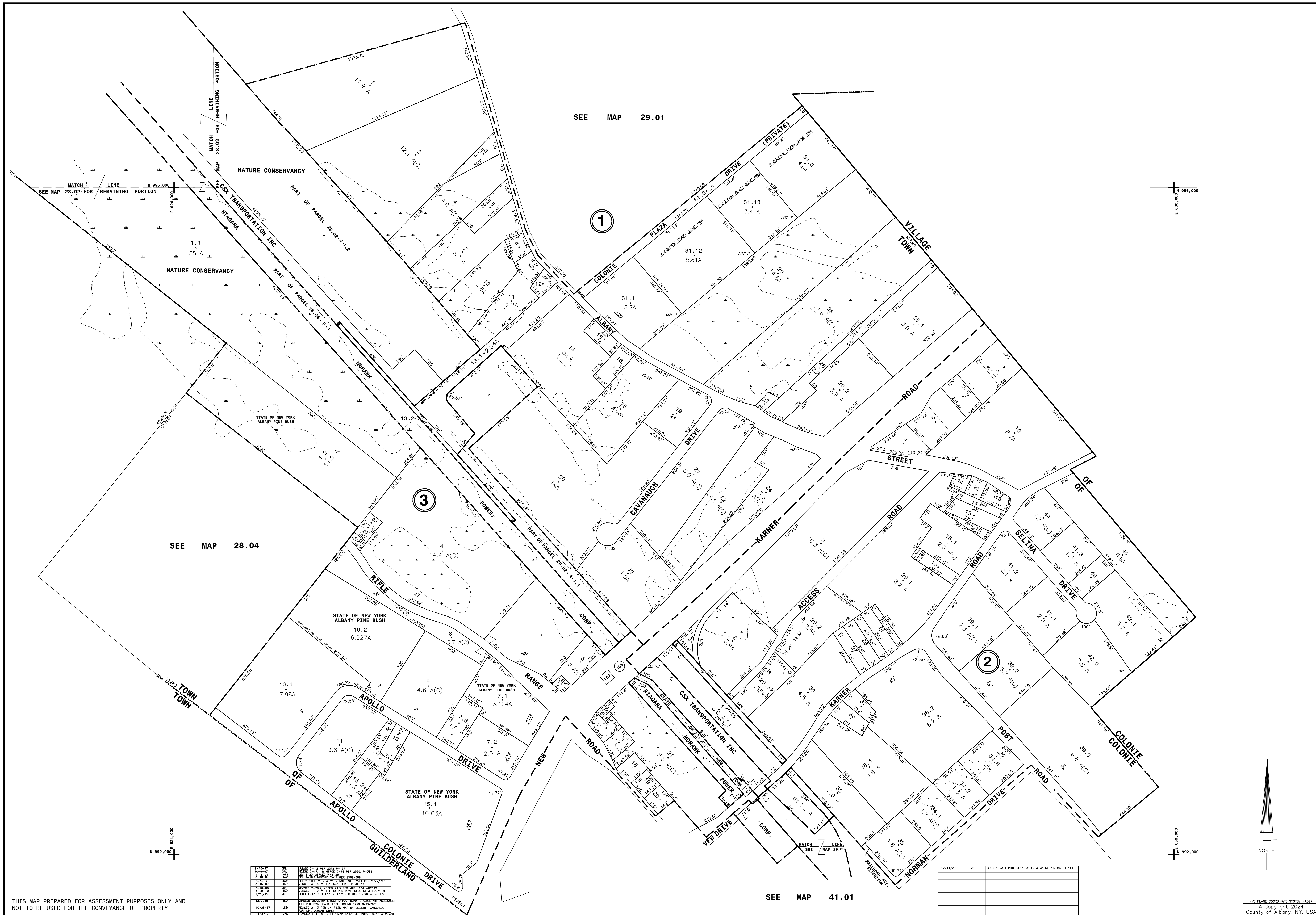


NYS IMAGERY 6631418



THIS MAP PREPARED FOR ASSESSMENT PURPOSES ONLY AND NOT TO BE USED FOR THE CONVEYANCE OF PROPERTY

| DATE      | BY  | CHANGES OR ADDITIONS  | DATE | BY | CHANGES OR ADDITIONS |
|-----------|-----|---|------|----|----------------------|
| 9-18-87   | DPL | CREATE 1-12 PER 2578 P-137  |      |    |                      |
| 10-24-87  | DPL | CREATE 1-14 PER 2578 P-137  |      |    |                      |
| 5-16-89   | WNY | REV. 2-21 MERRILL W-3 PER 2569/268                                |      |    |                      |
| 6-13-89   | WNY | REVISED 3-14 MERRILL W-3 PER 2572/775                             |      |    |                      |
| 3-15-90   | WNY | REVISED 1-19 MERRILL W-3 PER 2572/775                             |      |    |                      |
| 3-28-90   | WNY | REVISED 1-19 MERRILL W-3 PER 2572/775                             |      |    |                      |
| 7-28-90   | WNY | REVISED 1-19 MERRILL W-3 PER 2572/775                             |      |    |                      |
| 12-7-91   | JMO | CHANGED BROOKVIEW STREET TO FRONT ROAD TO CORRECT WITH ASSESSMENT |      |    |                      |
| 10-25-97  | JMO | REVISED 2-13 PER 2572/775 MAP OF GUNTERLAND                       |      |    |                      |
| 1/21/2021 | JMO | REVISED 2-13 PER 2572/775 MAP OF GUNTERLAND                       |      |    |                      |

| DATE     | BY  | CHANGES OR ADDITIONS                               | DATE     | BY   | CHANGES OR ADDITIONS                            |
|----------|-----|--|----------|------|---|
| 4-14-82  | DB  | ADDED PARCEL 2-20.2 PER 2311-377                   | 9-23-85  | MWA  | ADDED PARCEL 3-15.2 PER 2386-665                |
| 6-6-83   | JMO | ADDED PARCEL 34.2 + 34.3 PER 2239-293              | 1-24-86  | J.P. | ADDED PARCEL 1-31.2 PER 2289-319 REVISED 1-31.1 |
| 11-28-83 | DB  | ADDED PARCEL 1/20.2 PER 2444-1101                  | 6-26-86  | SMH  | REVISED 2-29 PER 2673-171                       |
| 1-10-85  | WNY | ADDED PARCEL 1-7 PER 2572/775                      | 6-26-86  | WNY  | ADDED PARCEL 4-14 PER 2386-117 REVISED 2-28.1   |
| 1-10-85  | WNY | ADDED PARCEL 1-7 PER 2572/775                      | 2-28-81  | WNY  | ADDED PARCEL 2-28 PER 2422-1033                 |
| 6-16-85  | WNY | ADDED PARCELS 2-41.5, 41.5 PER 2184-239 & 1297-344 | 12-19-81 | WNY  | REV. 1-16 PER 2477-75                           |

| PROPERTY LOT | DISTRICT NAME        | PROPERTY LOT | DISTRICT NAME        |
|--------------|----------------------|--------------|----------------------|
| 1            | 012001 South Colonie | 1            | 012001 South Colonie |

| SYMBOL | DESCRIPTION             | SYMBOL | DESCRIPTION |
|--------|-------------------------|--------|-------------|
| ---    | PROPERTY LINE           | ---    | WATER       |
| ---    | ORIGINAL LOT LINE       | ---    | WATER       |
| ---    | RAIL ROAD               | ---    | WATER       |
| ---    | STREAM OR DITCH         | ---    | WATER       |
| ---    | ROAD OR RAIL ROAD BNDY. | ---    | WATER       |
| ---    | STREET CENTERLINE       | ---    | WATER       |
| ---    | COUNTY LINE             | ---    | WATER       |

| SYMBOL | DESCRIPTION     | SYMBOL | DESCRIPTION       |
|--------|-----------------|--------|-------------------|
| ---    | CITY LINE       | ---    | TAX DISTRICT LINE |
| ---    | VILLAGE LINE    | ---    | TAX DISTRICT LINE |
| ---    | TOWN LINE       | ---    | TAX DISTRICT LINE |
| ---    | BLOCK LIMIT     | ---    | TAX DISTRICT LINE |
| ---    | CREAT. LOT LINE | ---    | TAX DISTRICT LINE |
| ---    | EASEMENT        | ---    | TAX DISTRICT LINE |
| ---    | WATER           | ---    | TAX DISTRICT LINE |

| DATE       | BY  | CHANGES OR ADDITIONS                                |
|------------|-----|---|
| 12/14/2021 | JMO | SUBD 1-31.1 INTO 31.11, 31.12 & 31.13 PER MAP 14414 |

TAX MAP 29.03  
 TOWN OF COLONIE  
 ALBANY COUNTY, NEW YORK  
 SCALE 1"=200'  
 TAXABLE STATUS DATE: 3/1/24  
 SHEET INDEX

NYS PLANE COORDINATE SYSTEM NAD83 © Copyright 2024 Albany, NY, USA