

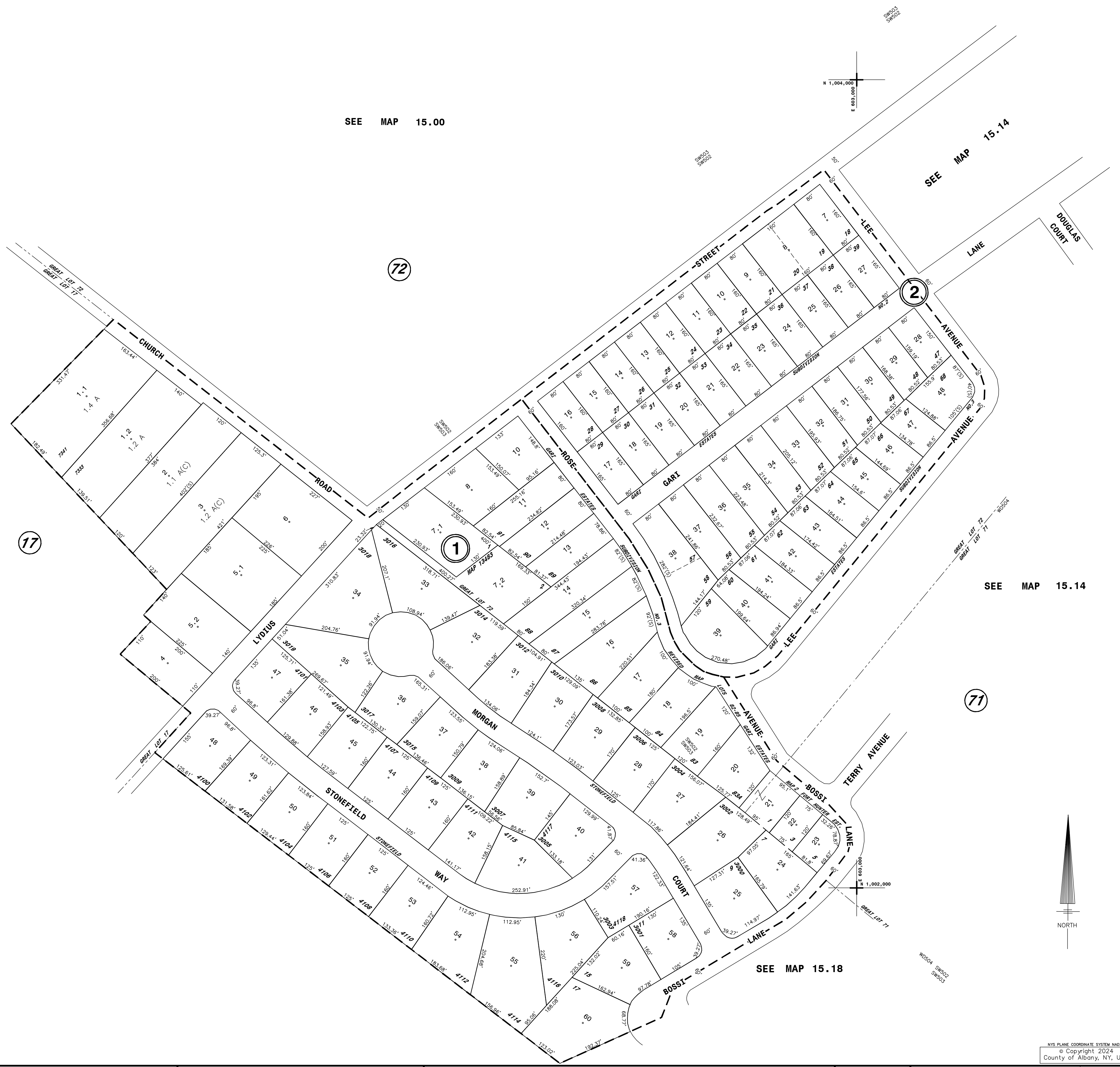
SEE MAP 15.00

SEE MAP 15.14

SEE MAP 15.00

SEE MAP 15.14

SEE MAP 15.18



THIS MAP PREPARED FOR ASSESSMENT PURPOSES ONLY AND NOT TO BE USED FOR THE CONVEYANCE OF PROPERTY

PREPARED BY  
**SMITH & MAHONEY, ENGINEERS & SURVEYORS**  
ALBANY, NEW YORK  
REAL PROPERTY TAX SERVICE AGENCY  
ALBANY COUNTY, NEW YORK

DIGITAL CONVERSION BY:  
**THE SANBORN MAP COMPANY INC.**  
PELHAM, NEW YORK

DATE		BY		CHANGES OR ADDITIONS	
12-21-83	DR			RELETED PARCEL 1-9, MERGED IN TO	
3-28-80	DR			ADDED 17-04-80 PER MAP OF STONEFIELD # 8061	
7/16/18	JRD			SUBD 7-1 INTO 7.1 & 7.2 PER MAP 13483	

TYPE		SYMBOL		DISTRICT NAME	
Fire	FD	FD 506 Fort Hunter Fire Dist.	Water	WD 504 - Fort Hunter Water Dist.	
School	SCH	Guilderland Central No.2 - 013002	Sewer	SW 502 - Guilderland Sewer Zone B	
			Sewer	SW 503 - Guilderland Sewer Zone C	

CITY		VILLAGE		TOWN		BLOCK		EASEMENT		WATER	
---	---	---	---	---	---	---	---	---	---	---	---

TAX DISTRICT		FIRE DISTRICT		COMMON OWNER	
---	---	---	---	---	---

GREAT LOT NO.	15.00	15.00	15.10
15.00	15.00	15.14	
15.00	15.00	15.18	

TAX MAP  
**TOWN OF GUILDERLAND**  
ALBANY COUNTY, NEW YORK  
SCALE: 1"=100'  
TAXABLE STATUS DATE: 3/1/24  
SHEET INDEX

NYS PLANE COORDINATE SYSTEM NAD83  
© Copyright 2024  
County of Albany, NY, USA