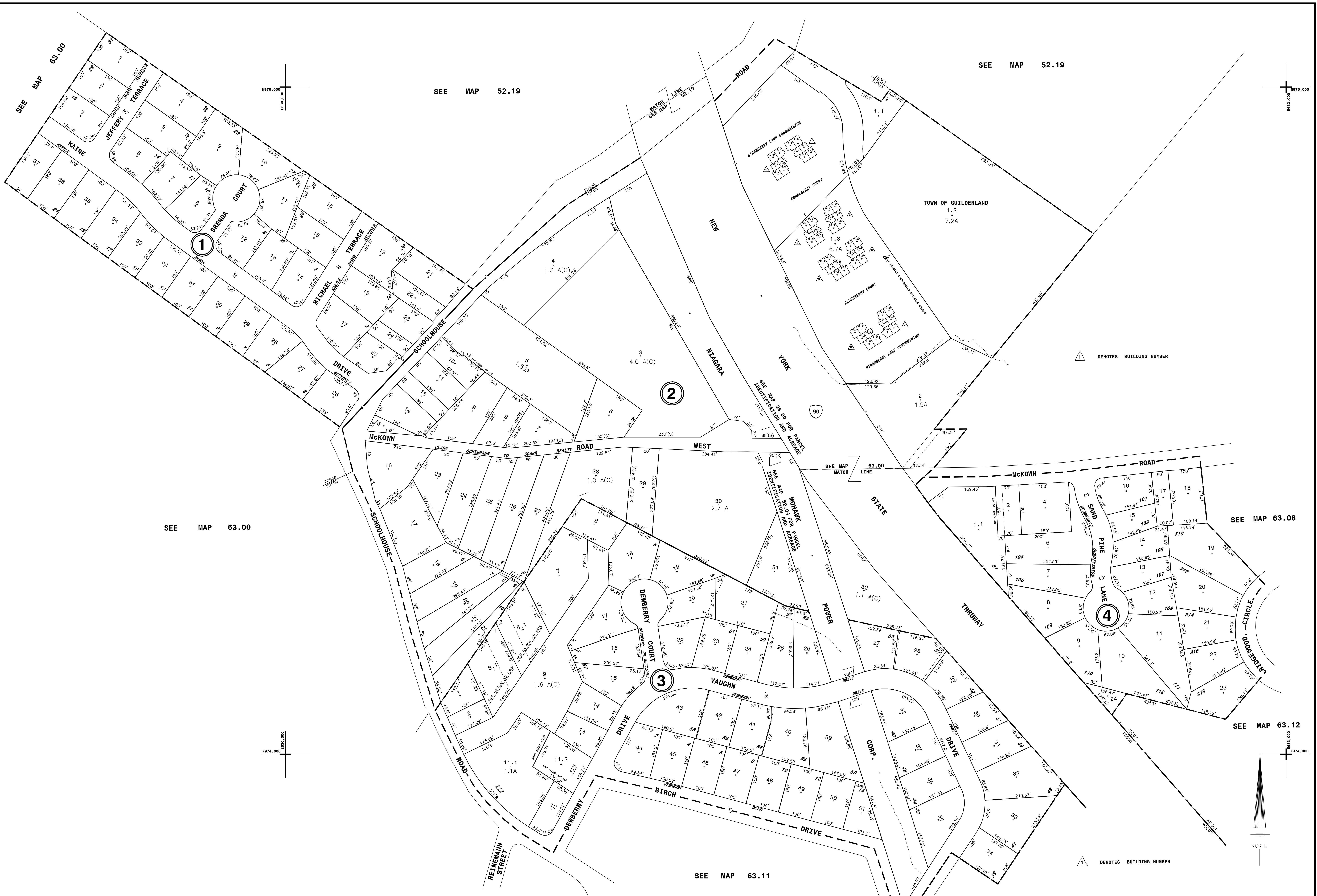


NYS IMAGERY 666400



THIS MAP PREPARED FOR ASSESSMENT PURPOSES ONLY AND NOT TO BE USED FOR THE CONVEYANCE OF PROPERTY

PREPARED BY SMITH & MAHONEY, ENGINEERS & SURVEYORS ALBANY, NEW YORK REAL PROPERTY TAX SERVICE AGENCY ALBANY COUNTY, NEW YORK

DIGITAL CONVERSION BY: THE SANBORN MAP COMPANY INC. PELHAM, NEW YORK

REVISION TABLE with columns for DATE, BY, CHANGES OR ADDITIONS

SPECIAL DISTRICTS with columns for TYPE, SYMBOL, DISTRICT NAME

LEGEND with columns for CITY LINE, VILLAGE LINE, TOWN LINE, BLOCK LIMIT, GREAT LOT LINE, EASEMENT, WATER, DISTRICT LINE

TAX MAP BLOCK NO. 74.12 with columns for TAX MAP PARCEL NO., STREET NUMBER, FILED PLAN LOT NO.

GREAT LOT NO. with columns for CALCULATED ACRES, DEED ACRES, SCALED DIMENSION, DEED DIMENSION, VISUAL CENTER OF PARCEL

TAX MAP 63.00 with columns for 52.19, 52.20, 63.08, 63.11, 63.12

TAX MAP 63.07 TOWN OF GUILDERLAND ALBANY COUNTY, NEW YORK SCALE: 1"=100' TAXABLE STATUS DATE: 3/1/24