

NYS IMAGERY 6031344, 6061342, 6001340, 6061340, 6061340, 6061344

SEE MAP 127.00

SEE MAP 137.00

SEE MAP 139.00

SEE MAP 137.00

SEE MAP 150.00

SEE MAP 150.00

THIS MAP PREPARED FOR ASSESSMENT PURPOSES ONLY AND NOT TO BE USED FOR THE CONVEYANCE OF PROPERTY

PREPARED BY SMITH & MAHONEY, ENGINEERS & SURVEYORS ALBANY, NEW YORK REAL PROPERTY TAX SERVICE AGENCY ALBANY COUNTY, NEW YORK

DIGITAL CONVERSION BY: THE SANBORN MAP COMPANY INC. PELHAM, NEW YORK

REVISION TABLE with columns for DATE, BY, CHANGES OR ADDITIONS, and a detailed log of map updates.

SPECIAL DISTRICTS table listing various districts like Fire, School, and Water with their respective symbols and names.

LEGEND table defining symbols for property lines, roads, creeks, and other geographical features.

Table with columns for TAX MAP BLOCK NO., TAX MAP PARCEL NO., and FILED PLAN LOT NO.

TAX MAP TOWN OF WESTERLO ALBANY COUNTY, NEW YORK. Includes scale, sheet index, and copyright information.

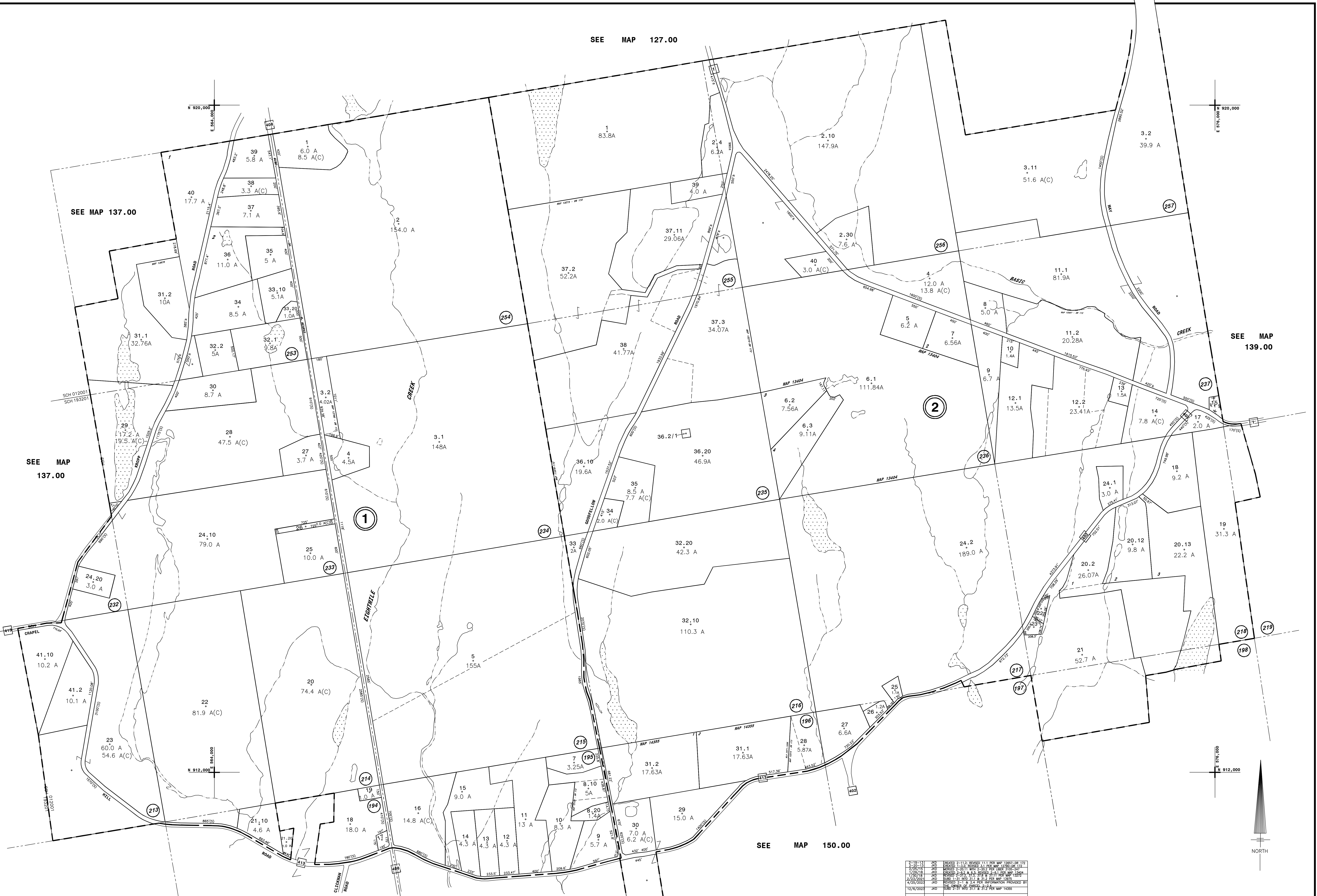


Table with columns for DATE, BY, CHANGES OR ADDITIONS, and a detailed log of map updates.

NYS PLANE COORDINATE SYSTEM NAD83 © Copyright 2024 County of Albany, NY, USA