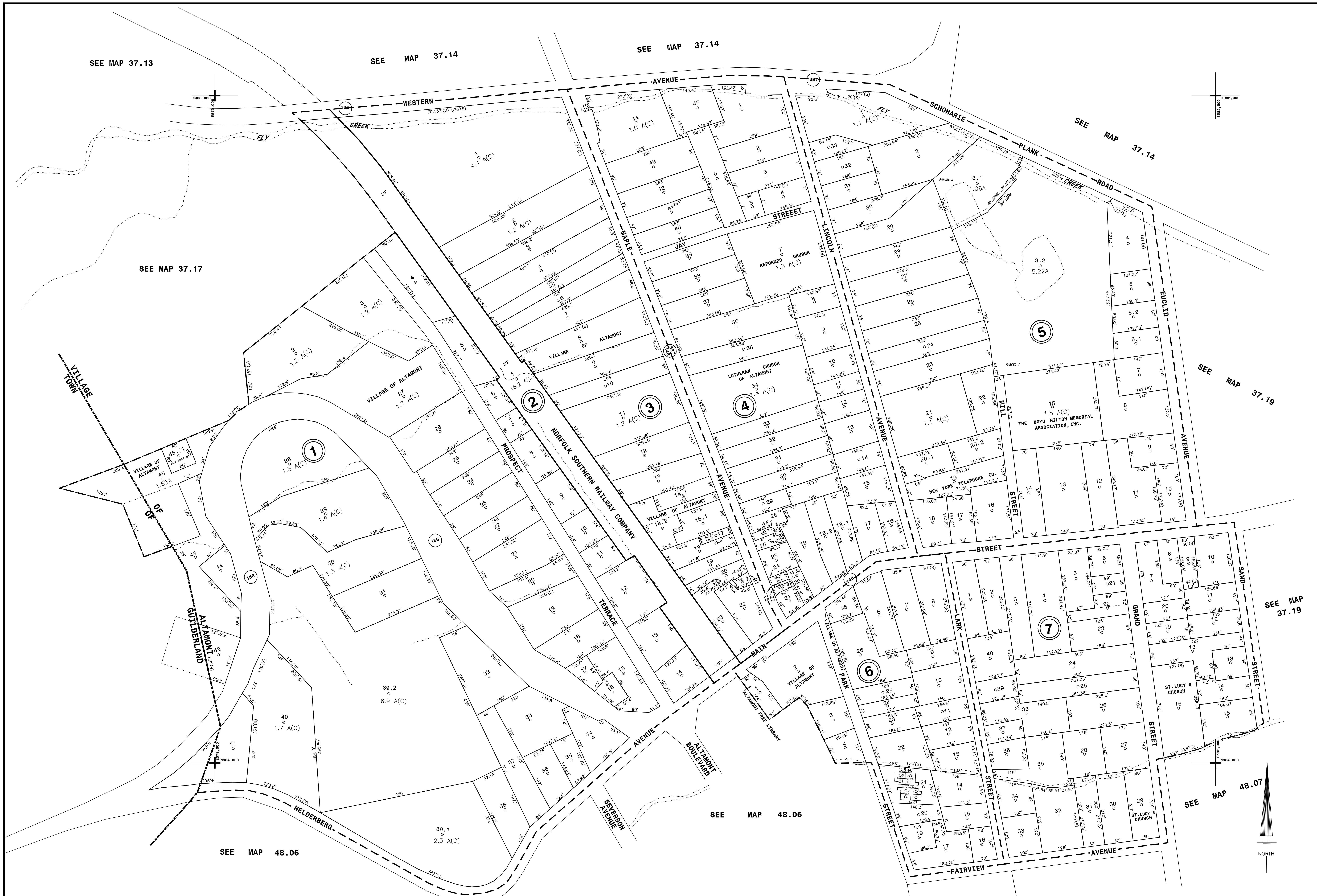


NYS IMAGERY 6121408; 6151408; 1410



THIS MAP PREPARED FOR ASSESSMENT PURPOSES ONLY AND NOT TO BE USED FOR THE CONVEYANCE OF PROPERTY

PREPARED BY SMITH & MAHONEY, ENGINEERS & SURVEYORS ALBANY, NEW YORK REAL PROPERTY TAX SERVICE AGENCY ALBANY COUNTY, NEW YORK

DIGITAL CONVERSION BY THE SANBORN MAP COMPANY INC. PELHAM, NEW YORK

REVISION TABLE with columns for DATE, BY, CHANGES OR ADDITIONS, and other revision details.

SPECIAL DISTRICTS table with columns for TYPE, SYMBOL, DISTRICT NAME, and DISTRICT NAME.

LEGEND table with columns for CITY LINE, VILLAGE LINE, TOWN LINE, etc., and their corresponding symbols.

TAX MAP BLOCK NO. 74.12.1-10 SHEET INDEX table with columns for map block numbers and sheet numbers.

TAX MAP VILLAGE OF ALTAMONT TOWN OF GUILDERLAND ALBANY COUNTY, NEW YORK. Includes map scale, north arrow, and sheet index.