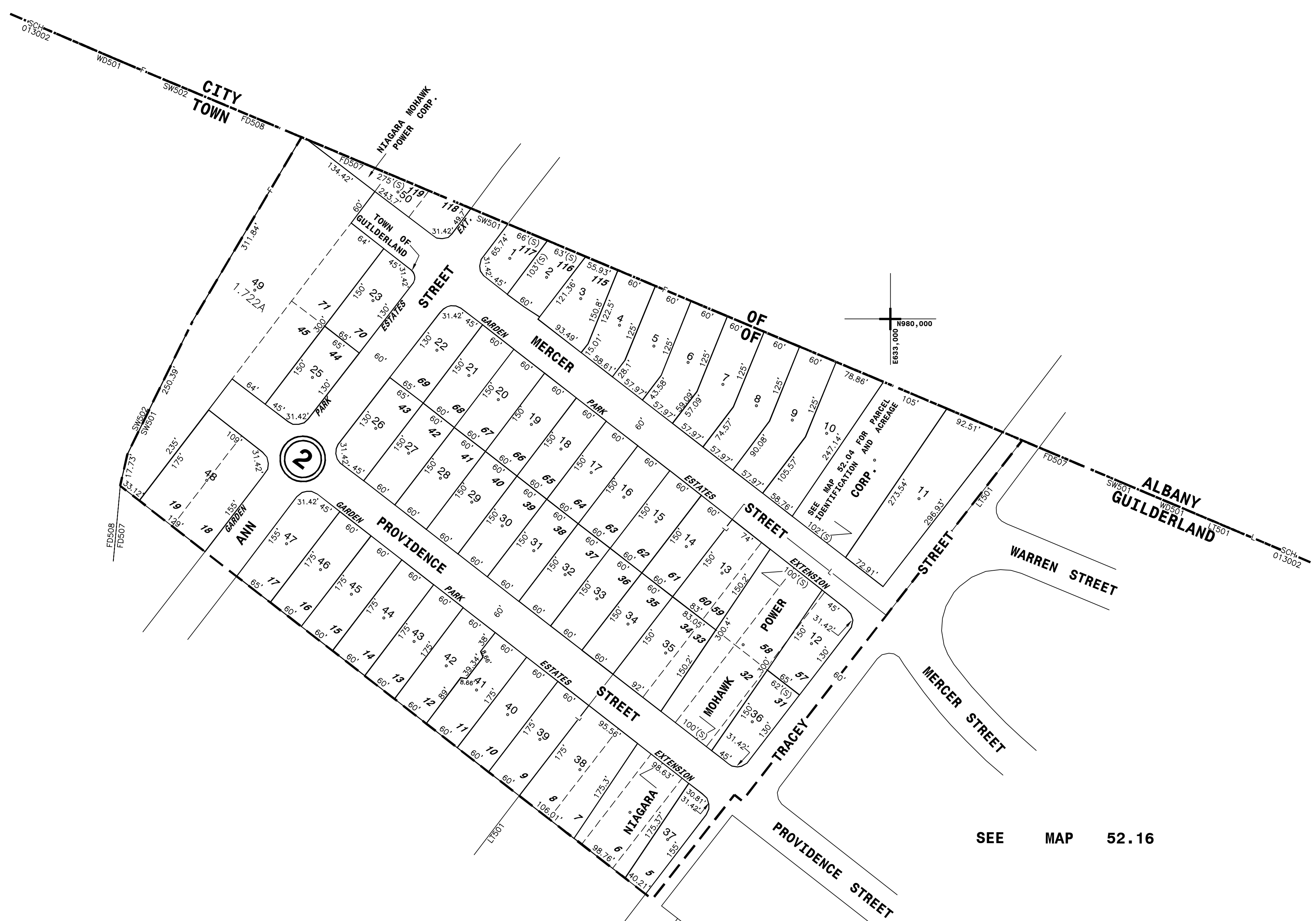
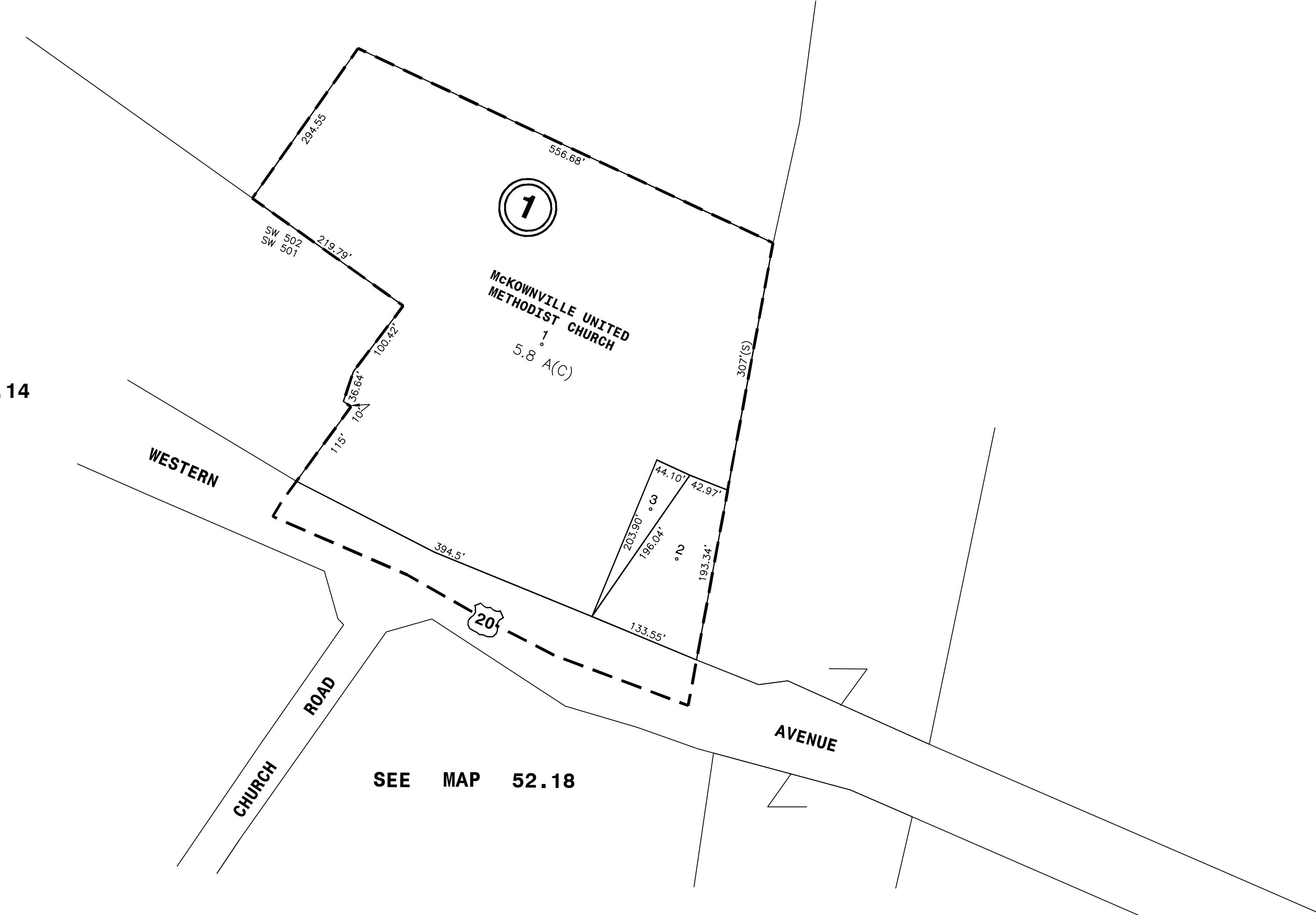


SEE MAP 52.04



SEE MAP 52.16

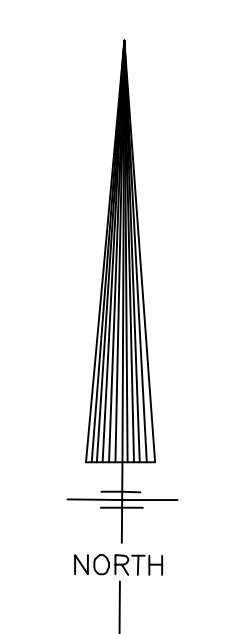
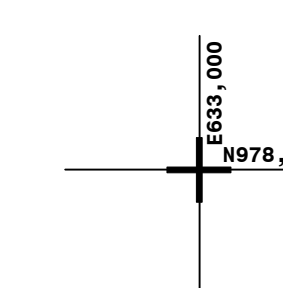
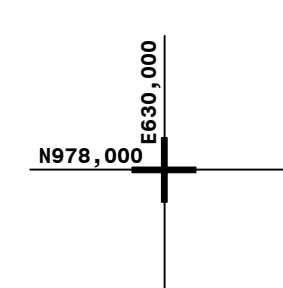
SEE MAP 52.01



SEE MAP 52.04

SEE MAP 52.14

SEE MAP 52.18



THIS MAP PREPARED FOR ASSESSMENT PURPOSES ONLY AND NOT TO BE USED FOR THE CONVEYANCE OF PROPERTY

PREPARED BY
SMITH & MAHONEY, ENGINEERS & SURVEYORS
ALBANY, NEW YORK
PREPARED FOR
REAL PROPERTY TAX SERVICE AGENCY
ALBANY COUNTY, NEW YORK

DIGITAL CONVERSION BY:
THE SANBORN MAP COMPANY INC.
PELHAM, NEW YORK

DATE		BY	CHANGES OR ADDITIONS	DATE		BY	CHANGES OR ADDITIONS
12-2-08	11-15-08	JWV	REV 1-1, 1-2 ORANGE 1-3 PER 3609/225				
		DN	WINGE 2-A, 4 & 2-19, 2-19, 2-19, 2-19, 2-19, 2-19				

TYPE		SYMBOL		DISTRICT NAME	
Fire	FD 507 - McKownville Fire District	Water	W	SW 502 - McKownville Water Dist.	
Fire	FD 508 - Westmore Fire District	Water	W	SW 501 - Westmore Water Dist.	
School	Guilford Central No. 3 - 013002	Sewer	S	SW 501 - Guilford Sewer Zone A	
		Sewer	S	SW 502 - Guilford Sewer Zone B	
		Light	L	LT 501 - McKownville Lighting Dist.	

PROPERTY LINE		SYMBOL		DISTRICT NAME	
ORIGINAL LOT LINE	---	CITY LINE	---	VILLAGE LINE	---
RAIL ROAD	---	TOWN LINE	---	BLOCK LIMIT	---
STREAM OR DITCH	---	GREAT LOT LINE	---	EASEMENT LINE	---
ROAD OR RAIL ROAD BNDY.	---	STREET CENTERLINE	---	COUNTY LINE	---

LEGEND	
TAX DISTRICT LINE	---
FIRE DISTRICT LINE	---
DENOTES COMMON OWNER	---
TAX MAP BLOCK NO.	74.12.1-10
TAX MAP PARCEL NO.	17
FILED PLAN LOT NO.	

GREAT LOT NO.	5
CALCULATED ACREAGE	7.1 A (C)
DEED ACREAGE	11.2 A
SCALED DIMENSION	725'(S)
DEED DIMENSION	53.67'
VISUAL CENTER OF PARCEL	*

52.01	52.16
52.04	52.16
52.04	52.19
52.20	

TAX MAP
TOWN OF GUILDERLAND
ALBANY COUNTY, NEW YORK
SCALE: 1"=100'
TAXABLE STATUS DATE: 3/1/24

NYS PLANE COORDINATE SYSTEM NAD83
© Copyright 2024
County of Albany, NY, USA